

THE GIFT OF LIFE CHANGING RESEARCH

IMPACT REPORT

JULY 1, 2021 - JUNE 30, 2022



YOUR SUPPORT SUSTAINS OUR WORK



If living through a global pandemic has reminded us of anything, it is this: our health is all we have. We know that when we support the health of mothers, we support the well-being of fathers, children, families, and entire communities. Our life changing research in women's health and reproductive biology is helping us create a new landscape, where the ripple effects of healthier pregnancies, mothers, infants, and patients can be felt by all people.

When we support women, we support all of humankind.

Our work at Magee-Womens Research Institute & Foundation (MWRIF) is possible because of people like you, who invest in a healthier future for us all — a tomorrow reliant upon the progress we make today. To power and sustain the bench research that ultimately impacts bedside care, we count on the generosity of you, our Magee Family. You are the individuals, teams, organizations, and businesses that help us continue to be a national leader in this field by ensuring that our scientists have the necessary resources to do their critical work.

In partnership with our supporters, we are raising awareness and making the impact of our research tangible both here in Western Pennsylvania and around the country. Across the nation, communities are popping up to help us achieve these goals, such as in Naples, Florida, the home of our Women's Health Symposium, and Los Angeles, California, where we held our first Women Who Rock benefit concert outside of Pittsburgh.

As we grow these national partnerships and relationships both at home in Western Pennsylvania and around the world, we are excited about returning to more in-person interactions, while also leveraging the technology and tools used during the pandemic. We look forward to connecting with patients who are grateful for their care and survivors who want to learn more about our research. As we continue building our pipeline of partners and supporters, we are also setting our sights on new opportunities to advance our efforts. Inside this year's report, you will see some of the many ways that your support drives our important work forward. We hope you will be inspired by our science, excited by our events, and interested in learning more about how you can become a part of our Magee Family. Whether you wish to make a gift, form a partnership, or volunteer at an event, there are so many ways to get involved with us.

If you are interested in learning more about MWRIF or want to understand how to be a part of this impact, please feel free to reach out to me at devineja@mwri.magee.edu. We look forward to connecting with you, and are ever appreciative that you, like us, seek to create a healthier world for women and for us all.

Warmly,

JANICE A. DEVINE

Vice President, Development,
Magee-Womens Research Institute & Foundation

When we support
women, we support
all of humankind.

Through our scientific research, we are paving the way for a new chapter of conversation about women's health and reproductive biology.

TO OUR MAGEE FAMILY,



We know that you, our dedicated community, fuel the impact we achieve each and every year. As we press onward together in this new and unique landscape created by the pandemic, we are thrilled to share that through your support, we have continued to evolve our research, expand our footprint, and engage more people who are invested in our mission: to change the way the world treats women.

This annual Impact Report illustrates the ways in which supporters like you have helped us progress in all those areas. Compared to last year, our donor base has grown by 37% — a significant bump for an organization of our size. We hope to continue engaging and growing this generous community who advance our impact.

Through our scientific research, we are paving the way for a new chapter of conversation about women's health and reproductive biology. Dr. Kyle Orwig, a fertility preservation researcher, has led the charge in bringing the Oncofertility Consortium meeting to Pittsburgh (page 6), and so with it the critical dialogue around protecting fertility for those facing cancer diagnoses and treatments. Newer Magee-Womens Research Institute researchers like Dr. Eldin Jašarević, who examines the microbiome during pregnancy, demonstrate our investment in forward-thinking areas of science with the potential for clinical impact in our communities (page 10). As exemplified in the origin story of Magee-Womens Research Institute in Erie, Pa. (page 28), our goals include transforming the lives of individuals not only here in Pittsburgh, but throughout the region and around the world. Erie is a perfect example of how research can begin to flourish and create opportunities for women to engage in scientific trials, thus expanding our knowledge base and capacity for impact.

Our footprint grows even wider when we consider the success of events such as our Women Who Rock benefit concerts. The Los Angeles show held in May 2022 (page 24) brought the Magee mission to the West Coast. With the support of the Recording Academy, the organization behind the GRAMMYS, we took the stage to tell our story to hundreds of new ears and new listeners. Our Winter Health Symposium in Naples held last March also garnered enthusiasm and participation

from our community there. We are fortunate to have developed such strong relationships with our friends in Naples, and given the devastating impact of Hurricane Ian, we are sending our thoughts and prayers to all those affected.

Meanwhile, back home in Pittsburgh, we continue to strengthen our partnership with UPMC Magee-Womens Hospital, which allows us to achieve our bench-to-bedside approach within a brand known for its top-tier patient experiences. In collaboration with UPMC Magee, UPMC Hillman, and A Glimmer of Hope Foundation, we held our inaugural Race to Beat Women's Cancers in September 2021 (page 22), which showcased our shared commitment to advancing research for critical women's health conditions. Through working with local clubs such as the Volunteer Service Board, The Women's Auxiliary, and The 25 Club (page 30), we continue to not only bolster our research, but also enhance patient care at UPMC Magee as well.

The impact we made this year is thanks to the support from our community or in other words... you. Your continued investment in Magee enables us to remain the premier national research institute in women's health and reproductive biology, while impacting as many lives as we can with our science and care here in Western Pennsylvania and in communities around the globe.

We hope you will follow along with us as we continue to build upon these collaborations and forge new ones. Be on the lookout in March, where we will be featured in 153 Hard Rock Café locations across the country and globe. Through this partnership, we are raising both awareness and funds toward life changing research and critical patient care here at Magee.

Together, we are creating the future of women's health and reproductive biology. And we thank you for being the fuel that drives us forward, year after year.

Yours,

MICHAEL J. ANNICHINE

CEO and President,
Magee-Womens Research Institute & Foundation

WORKING TOGETHER TO PRESERVE FERTILITY BEYOND CANCER

THE ONCOFERTILITY CONSORTIUM MEETING MIGRATES TO MWRI

by Gina Edwards

How do cancer treatments like chemotherapy and radiation impact a patient's fertility?

This question drove the creation of the Oncofertility Consortium — a multidisciplinary community examining how to integrate fertility preservation conversations with physicians and families amid a devastating disease diagnosis.

The Oncofertility Consortium was established in 2007 by Dr. Teresa Woodruff, then a professor of Obstetrics and Gynecology at Northwestern University. The NIH Roadmap funding for the Consortium included Northwestern University, Oregon Health & Science University, University of California in San Diego, University of Missouri, and University of Pennsylvania.

Dr. Kyle Orwig, a fertility preservation researcher at Magee-Womens Research Institute (MWRI), explains that when the Consortium was created in the early 2000s, a cancer diagnosis was considered dire, and conversations about quality of life after cancer were not common.

"In those early days, nobody talked about fertility in the context of the cancer diagnosis," Dr. Orwig says. "That just wasn't done."

Dr. Woodruff coined the term "oncofertility" in 2006 to indicate that the field is not strictly fertility nor oncology, but in fact an emerging multidisciplinary social science.

"It's a new discipline that recognizes the fact that we have to reach across different areas of expertise to provide the best quality of care for our patients. And neither one of those disciplines individually would be able to do that," Dr. Orwig says. "We had to hold hands and do it together."

For the first decade of the Oncofertility Consortium's existence, more than 200 attendees from around the world gathered in Chicago for the annual conference, which included physicians, researchers, social scientists, psychologists, and patient navigators.

To Dr. Orwig, this meeting unified a group of people that might not have otherwise gathered. "Over the years, the conference has helped foster an international community of people with a common interest in ensuring the highest quality of life for cancer survivors, including the possibility of having children. And so, we start to work together around that issue," he says.

Periodically, Dr. Woodruff would suggest that Dr. Orwig host the next Oncofertility Conference in Pittsburgh. The disruption of COVID-19 in 2020 and the transition of Dr. Woodruff and the Oncofertility Consortium from Northwestern University to Michigan State University, set the stage for a change of venue. Dr. Orwig and his team at MWRI were ready to take on the challenge.





“We’re providing hope for patients at a time in their life when they’re not having a lot of hopeful discussions. We help patients look beyond a diagnosis of cancer to a healthy and productive life after cure... that is hope.”

—Dr. Kyle Orwig

“Teresa is the figurehead and transcendent leader of the Oncofertility Consortium. She helped create the field where I do my life’s work,” Dr. Orwig says. “We were honored to help carry the leadership torch and host the Oncofertility community here in Pittsburgh.”

After seeking institutional support from MWRI, and with Dr. Woodruff’s endorsement, Dr. Orwig started to plan and raise funds to hold the conference in Pittsburgh. Though the planning occurred amidst changing COVID-19 restrictions, the team committed to holding the Oncofertility Conference in-person at a local conference center to accommodate the number of attendees, maintain the academic style of the gathering, and, most importantly, bring together a close-knit community of Oncofertility experts after a 2-year hiatus.

The international Oncofertility community appeared ready to emerge from the COVID-19 bubble, as the final attendance for the May 2022 event in Pittsburgh was on par with past events. Dr. Orwig and his wife Jennifer even hosted the conference attendees at their home to continue networking and collaborating over wood-fired pizza.

“We were really pleased to get that kind of attendance considering the new location, COVID, everything, and it went great,” Dr. Orwig says.

He hopes the international attendance continues to grow, as there are lessons in

fertility preservation that can be gleaned from work taking place around the world. Dr. Orwig adds that the community created by the Oncofertility Consortium has a common “passion and compassion” for patients facing these challenges, which motivates members to openly share their protocols and experiences to accelerate the pace of collective learning and improve the quality and accessibility of patient care.

“Collectively, we can learn how best to make a discipline that really nobody knows about available and accessible to anybody who might need it,” he says.

Planning for the 15th Annual Conference of the Oncofertility Consortium in Pittsburgh is already under way, with the continued commitment to unite to serve patients during a critical moment of their lives.

“We’re providing hope for patients at a time in their life when they’re not having a lot of hopeful discussions,” Dr. Orwig says. “We help patients look beyond a diagnosis of cancer to a healthy and productive life after cure... that is hope.”

To learn more about the 2023 Oncofertility Consortium Conference, visit: oncofertility.msu.edu

MAGEE-WOMENS RESEARCH INSTITUTE & FOUNDATION

BOARD OF DIRECTORS

July 1, 2021 – June 30, 2022

Michael J. Annichine, *President* Kelly R. Gray, *Vice Chair*
 Carrie L. Coghil, *Chair* Jason M. Harrison, *Treasurer*
 Theresa Z. Bone, *Vice Chair* Susan P. McGalla, *Secretary*

Richard H. Beigi, M.D. Donald Burke, M.D. M. Karen Cooper Robert P. Edwards, M.D. Joan Ellenbogen Penny Holden Margaret P. Joy Anthony Lacenera Ed Lettieri	Arthur S. Levine, M.D. Suketu Mansuria, M.D. Linda S. Melada William A. Pietragallo, II, Esq. Mary Richter Maria Rivera-Johnson K. Scott Roy Yoel Sadovsky, M.D.	W. Scott Sanford Fern Schwartz Anantha Shekhar, M.D. PhD Patricia L. Siger Margaret B. Snavely Shawntae Spencer David J. Spigelmyer Chad Tomosovich, Esq.
---	---	--

EMERITUS MEMBERS

Irma E. Goertzen Elisabeth B. McCullough Leslie Nute Nancy Rackoff David Smith

WOMEN’S AUXILIARY BOARD OF UPMC MAGEE-WOMENS HOSPITAL

July 1, 2021 – June 30, 2022

Peggy Snavely, *President* Betsy McAleer, *Treasurer*
 Linda Stilley, *Secretary* Doris Delserone, *Assistant Treasurer*

ACTIVE MEMBERS Ann Borland Lenore Calderone Wendy Camlin Abigail Cook Megan Culig Jodi David Doris M. Delserone Lynn Desmone Emma Dieffenbach Karen Dimopoulos Barbara Dunkelman Maureen Elder	Mirella Ferraro Sally Ford Mary Lou Gatewood Jamie Goslin Marilyn Hartland Jeanie Hendry Joanne Herrmann Judy Huff Janet Hunt Lisa Ireland Kathy Kegarise Peggy Kennedy Dawn Kotanchik	Emily Lisowski Cathy Lombardi Marilyn Maiello Betsy McAleer Denise McGinley Kaethe McGonigle Linda Mckamish Ginny Merchant Pert Pivirotto Karen Reinecke Sue Rielly Peggy Snavely Linda Stilley	Lynn Thompson Adele Torockio Sallie Wagner Sue Warden Allison Wateska Shirley Weber HONORARY MEMBERS Mary Jane Diamantopoulos Pat Lagness Maureen Puntill Gwen Robosson
---	--	---	---

THE TWENTY-FIVE CLUB MEMBERS

July 1, 2021 – June 30, 2022

PRESIDENT Penny Holden	Dani Grego Janice Hackett Natalie Hoffman Laura Kronk Shanon Mahramas Dani Jo McLane Barb Mendlowitz Barbara Norris Kathe Patrinis Faye Sampson Anne Simon Peggy Snavely Arlene Sokolow Judy Woffington Heather Ziccarelli
EVENT CHAIR Christine Blose Stephanie Bozic Cynthia Carrow	
ACTIVE MEMBERS Lynn Bainbridge Terri Bone Jeanne Caliguiri Janet Campbell Susan Fitzsimmons Michel Franklin	

VOLUNTEER SERVICE BOARD

July 1, 2021 – June 30, 2022

Karen M. Cooper
President

ACTIVE MEMBERS
Mary Ann Belles
Deena Chottiner
Karen Cooper
Irene Damratowski
Louise Horvath
Becky Jones
Rhonda Magdsick
Mary Tambellini
Audre Tomko
(Associate member)

EXPLORING THE ECOSYSTEM WITHIN:

BUILDING A BETTER UNDERSTANDING OF THE MICROBIOME IN PREGNANCY

by Gina Edwards

Imagine sitting down to enjoy your favorite meal. With the help of your knife and fork, you slice and poke the contents on your plate and raise a bite to your lips to eat.

Much like the dinnertime utensils prepped your meal for consumption, the human body is equipped with legions of microscopic helpers that not only break down and process our food, but also support homeostasis, early life development, immune system function, and possibly much more.

This mighty ecosystem comprised of trillions of microorganisms living on our skin and inhabiting our mouths, gut, and reproductive tracts is the microbiome. While the microbiome is often associated with digestion (“the knife and fork of our genome”), scientific investigation continues into the entirety of the microbiome’s behavior and functions, and its influence on our overall health.

Why Does the Microbiome Matter?

For many years, microbes, or those little bugs living and working in our internal ecosystem, were associated with the development of disease. About 15 to 20 years ago, things changed.

With the advent of recent technologies to sequence the microbes outside of a Petri dish, scientists began to probe other microbiome functions, discovering that it has much more to do with supporting our overall well-being than previously thought.

“We realized that [microbes] have absolutely critical functions for life on Earth — especially for our own physiological functioning,” explains Dr. Eldin Jašarević, a Primary Investigator at Magee-Womens Research Institute (MWRI) and Assistant Professor in the Department of Obstetrics, Gynecology, and Reproductive Sciences and the Department of Computational and Systems Biology at the University of Pittsburgh.

“We think they’re involved in things like food processing, and then our microbes transform these food components into tens of thousands of metabolites, vitamins, and nutrients. How is this incredible diversity and richness contributing to our health? These are unknowns, but we think they are essential for development, maturation of our immune system, and proper brain function.”

But the microbiome can also turn against us. Research conducted by Dr. Jašarević showed for the first time that childhood trauma or stress during pregnancy disrupted the ability of the mother’s microbiome to produce critical nutrients for the developing brain. These offspring were more sensitive to stress, displayed behavioral dysfunction, and showed lasting changes in the brain.

Dr. Jašarević’s research team is now tackling the most important questions that remain about the ways the microbiome works during pregnancy, and how its information could be used to improve clinical care.

Could the microbiome tell us what therapeutic interventions should be offered during pregnancy? Can it help us in predicting offspring outcomes? Might it offer insights into ways to prevent health disparities from affecting future generations? These are the very questions Dr. Jašarević, and the “Maternal Microbes” research team are motivated and focused on better understanding.

Part of this research requires teasing out foundational comprehension of how the microbiome assists in pregnancy, so that therapeutic interventions are more precisely guided.

“We are currently facing a real global challenge: Less than 16% of studies on dietary and nutritional recommendations include pregnant individuals,” Dr. Jašarević says. “If we do not have a solid understanding of nutritional requirements in pregnancy, how are we going to know when that baseline goes into the pathological? Or how do we know if you veer into the pathological, how do we bring you back to a baseline?”

Tapping into the Local Ecosystem

This historical exclusion of pregnant people from clinical trials has produced significant gaps in our understanding of proper dietary intake and nutrition recommendations during this critical time — a concerning fact considering that medical nutrition therapies are the mainstay management in pregnancy and that diet is one of the most potent modifiers of microbial communities.

By combining forces with other researchers in the MWRI community, Dr. Jašarević hopes to explore these various branching points for expanding research that can have direct implications and applications for clinical care.

“When I started my research group one year ago, I saw an immense potential at MWRI to usher in a new frontier of science that is focused on maternal and child health through the lens of the microbiome,” he says. “The world-renowned basic and translational research programs with the clinical integration at Magee-Womens Hospital provided the perfect setting to conduct this boundary-pushing research.”

One example of this symbiotic relationship is Dr. Jašarević’s collaboration with Dr. Maisa Feghali, a pioneer in identifying novel therapies for diabetes mellitus in pregnancy as a physician in maternal fetal medicine at UPMC Magee and Primary Investigator at MWRI.

This research team is exploring whether changes in the microbiome can predict the likelihood of a pregnant individual developing gestational diabetes and whether they will respond to a specific nutritional and pharmacological intervention. They hope this work will provide a more sensitive tool for predicting which patient will be at the greatest risk for adverse pregnancy outcomes, and how we can take better care of both mother and child.

He adds that collaborating with physician-scientists like Dr. Feghali offers key insights into the areas in need of improvement that come straight from patients.

“That’s been a beautiful marriage of someone who sees the patients and who knows what they’re going through, and allowing that to drive our research questions so we can build better models and treatments,” he says.

Dr. Jašarević’s research team is now tackling the most important questions that remain about the ways the microbiome works during pregnancy, and how its information could be used to improve clinical care.

Research that Benefits Communities

Serving the public through research isn’t just a priority to Dr. Jašarević, but it is a responsibility in reporting their findings that he and his team take seriously.

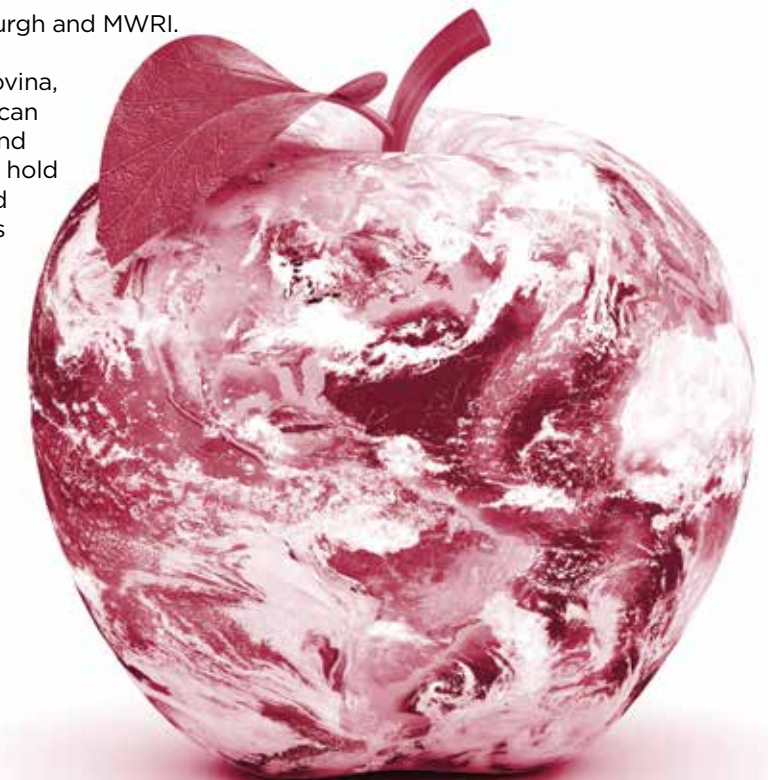
“One of the most profound experiences that has informed the way I think about our science was moving from Philadelphia to Baltimore City during my postdoctoral training. We were doing a lot of research on the lasting impacts of maternal stress and trauma on the offspring brain using mouse models. It was not until we started interacting with community members that it became profoundly clear that our research was not reaching them. In some ways, I realized that we are failing at our most fundamental role of being scientists, and that is to advocate for our local communities using our research,” Dr. Jašarević says.

And it is this vision that brought Dr. Jašarević to Pittsburgh and MWRI.

As a first-generation refugee from Bosnia and Herzegovina, Dr. Jašarević draws inspiration from communities that can withstand, adapt to, heal from adversity and trauma, and flourish. Current studies taking place around the world hold great promise, showing that we can alleviate childhood malnutrition through microbiota-directed interventions and can develop better, culturally competent interventions in pregnancy.

As Dr. Jašarević lists projects and findings that could help us better understand our microbial ecosystem, he pauses to add: “For so long, I have thought about how our research can be a benefit locally and globally. I cannot help but feel sheer excitement being surrounded by students, trainees, and collaborators that share the same dedication and worldview.”

To learn more about Dr. Jašarević and his team’s work, visit maternalmicrobes.org





Kelly and Tom Finley of Union Township, Pa., were excited to find out the gender of their identical twins at Kelly's 17-week prenatal appointment in the spring of 2010. But during the routine ultrasound her doctor was silent with a stoic expression.

"My doctor turned to me and said my babies had Twin-to-Twin Transfusion Syndrome and that it was one of the worst cases he had ever seen. I was in shock," Kelly says.

Twin-to-Twin Transfusion Syndrome (TTTS) is a condition where twins share common vessels on the placenta, causing one baby to receive too much blood volume, while the other baby receives too little. Kelly's TTTS diagnosis was extremely advanced. One of the twins had barely any amniotic fluid, and doctors were not optimistic this baby would make it.

There are few hospitals that offer care for TTTS, because only 10% of identical twins who share a placenta will develop this condition. Early intervention is key, and one or both babies may not survive if nothing is done. Kelly was immediately sent to UPMC Magee-Womens Hospital, the only center in the geographically accessible region that can treat the syndrome. Dr. Stephen Emery, a UPMC Magee-Womens Hospital Maternal-Fetal Medicine specialist, manages these complicated monochorionic (single placenta) pregnancies.

Dr. Emery was able to separate the blood vessels connecting the babies using a laser ablation. Within hours of surgery, the ultrasound showed the procedure was a success, and the fluids were evening out in both babies. "TTTS can potentially harm three patients, the mother and both babies, so this treatment really improves overall perinatal outcomes," explains Dr. Emery.

"It was only the second TTTS laser ablation performed at Magee," Kelly says. "When we heard both of their heartbeats after the surgery, I just thought to myself, 'I'm going to raise these two little fighters.'"

On Dec. 1, 2010, Cassandra and Irelynn Finley were born five weeks early via Cesarean section. Today they are healthy, active 12-year-old girls. Despite prematurity, the Finley twins avoided a potential hospital stay of several weeks and were strong enough to be discharged with their mother. The Finley twins' remarkable story was included in the Discovery Channel show, "Life Changing Medicine," which aired when the girls were just 9 months old.

"We were told to be cautious and expect developmental delays," Kelly says. "But at every checkup, the doctors are more and more amazed."

During the years that Cassandra and Irelynn attended Union Memorial Elementary School, they organized several events to raise awareness and money for TTTS, benefiting UPMC Magee and its fetal therapy program. "We want there to be funds available for families and for research. There are only so many doctors in the U.S. who deal with TTTS, and families need means to travel," Kelly states.

When the Finley twins were in first grade, they sold paper twin-to-twin hearts for \$2 and displayed them on school walls leading up to Valentine's Day. That year they also organized the donation of some of the proceeds from purchases made at one of the girl's favorite frozen yogurt shops, Sweet Frog's in Union Township, to go to UPMC Magee.

This year, the twins finished fifth grade with one last fundraiser at Union Memorial where they raised more than \$400. Cassandra and Irelynn sold paper daisies, the TTTS Foundation's symbol of hope, for \$1 and displayed them throughout the hallways of their school building.



(L to R) Irelynn, Kelly, and Cassandra Finley

In an email, the twins state together, "If everyone knows about this terrible disease then maybe it will help save more babies diagnosed with it. We want to give back because so many people prayed for and supported our family when Mommy was diagnosed with TTTS."

At the 2022 Noah Angelici Memorial Golf Event, Dr. Emery shared the Finley twins' beautiful story of commitment to giving back and fundraising for UPMC Magee, as well as the positive update that UPMC Magee continues to lead the way in continuously improving TTTS outcomes. The whole room broke into a standing ovation. "I have a profound gratitude for these survivor patients. Their acts of generosity have now moved from the parents to the children," states Dr. Emery.

"We're doing all this because of everything that was done for my girls to save them," Kelly explains. "Because after almost 12 years we are still so thankful for everything that UPMC Magee and Dr. Emery have done for our family."

GIVING BACK IS ELEMENTARY

by Erin Betler

CARING BEYOND THE CLINIC

TANGIBLY SUPPORTING CANCER PATIENTS ALONG THEIR JOURNEYS

by Gina Edwards

For Sara Maloney, Lead Patient Navigator at UPMC Magee-Womens Hospital, discussing cancer diagnoses is a familiar yet difficult part of the job. In fact, often when working with a patient who just received their diagnosis, Sara's first task as a social worker is to address the unimaginable shock and panic that accompanies the news.

"[The patient] didn't ask for this, and they didn't plan for this," Sara says. "So, it's not something that you can make sure you have 'X' amount of money saved up for or 'X' amount of PTO from work."

As Sara describes it, her job is to do "everything but treat the cancer." She learns from patients about the emotional, social, and financial difficulties that arise, and works to support and assist them and their families in navigating the challenges they may encounter. Those with advanced-stage diagnoses, such as metastatic breast cancer, also face added realities like long-term treatment and end-of-life decisions.

The tremendous toll that cancer has on patients is something Dr. Margaret "Peg" Rosenzweig knows well. As a Distinguished Service Professor of Nursing at the University of Pittsburgh and a certified nurse practitioner, her experience and research has focused on equity in cancer treatment. She has found through her research and work that, unsurprisingly, socioeconomic insecurity has a negative impact on patient outcomes.

"We have a 22-year database of patients that have had advanced stage metastatic breast cancer," Dr. Rosenzweig says. "From that database and from our experience in working with patients, we realized how patients with certain [financial] vulnerabilities have a more difficult time with the experience of advanced stage breast cancer, and we certainly see that clinically as well." Dr. Rosenzweig decided to do something about it.

In 2017 she wrote a grant application to the Pittsburgh Susan G. Komen affiliate for a supportive care pilot program. Each week, the care team of primarily nurses and social workers (otherwise known as navigators) gathered to review the needs of advanced stage cancer patients and then both refer and connect them to appropriate resources.

"There are multiple sources of support for women with breast cancer — agencies offer house cleaning, acupuncture can be offered for symptom management, or we can provide transportation and food support, but it takes the navigators to pull all that together," Dr. Rosenzweig says. "Each patient may need something. In addition, there are patients that need dietary referrals. There are patients that need pain management or palliative care referrals. The needs can include all sorts of things." It was also clear that patients had numerous emergency financial needs that developed over the course of illness.

According to the paper published on the pilot program in the American Journal of Hospice and Palliative Medicine, after the inception of the program, patients had increased referrals to existing resources, improved patient reported outcomes (such as symptoms), and there was a decrease in calls to the clinic, and fewer emergency room visits — all suggesting improved coordination.

Dr. Rosenzweig documented these needs and then secured a grant from the Ladies Hospital Aid Society for something quite tangible: emergency patient funds. The fund was used for numerous needs, including food, a wheelchair ramp, durable medical supplies, childcare (so children do not have to accompany a mother to treatment), transportation to treatment, and parking support. In other words, a fund for necessities that occur during metastatic breast cancer illness. Patient navigators documented the needs and tracked every penny spent.

"The fund just makes it so that everything isn't such an emergency — so everything isn't so stressful for the patients," Dr. Rosenzweig says. "We can't pay copays, and we can't pay the cost of cancer medications, but we can help with these things that just come up all the time." The fund provided financial help during an already tumultuous time in the lives of these patients. But once the initial grant money was depleted, the program needed a way to replenish the funds.

Dr. Adam Brufsky, Professor of Medicine at the University of Pittsburgh, Co-Director of the Comprehensive Breast Cancer Program, and Medical Director of the UPMC Magee Cancer

Program, has been supporting breast cancer research with philanthropy for more than 20 years along with his brother Seth (a Founding Partner of the Ares Group), in honor of their mother who died of pancreatic cancer in 1994. In 2020, Dr. Rosenzweig gave him a suggestion: fund the supportive care program.

He took to the idea immediately, having witnessed the accounts of how cancer impacted the lives of his own patients. "When you're hit with a diagnosis of cancer like this, in particular, metastatic breast cancer, it disrupts your life immensely," Dr. Brufsky says. "A lot of people who are maybe not in a great financial position and suddenly [the diagnosis] brings things to the edge."

Dr. Brufsky recalls a patient who brought this reality into relief. "I remember the story; she was getting therapy for metastatic breast cancer and was doing well. She was coming to clinic all the time to get her chemo, which is every week, and seeing me every month. And I thought she was doing pretty well," he recalls. "The navigators told me that she was homeless. She was living in a car by the airport, and that really struck me. I had no idea. I'm just in there trying to help someone get through their cancer."

He adds that funds like this are a good adjunct to supporting research, as they provide immediate support while therapies are being developed for five to 10 years from now. Not to mention, the biggest cause of bankruptcy in the United States is medical expenses. "Financial aid has a substantial impact, even small amounts for people who are undergoing cancer and are financially stressed," Dr. Brufsky says.

In 2021, Dr. Rosenzweig and her husband matched the original funds from Dr. Brufsky and his brother Seth for the program and credits the team of navigators for their skill in overseeing the program as it continues. "I know these navigators are so fantastic and meticulous about the ways that they distribute this money," she says.

Navigators like Sara, who has worked at UPMC Magee for three years and UPMC for 15, are thankful for being part of a multidisciplinary care team that supports many elements of the patient's experience — not just the medical ones.

"The multidisciplinary approach to the care team is so needed in cancer since it touches not only the medical side, but all these other aspects to it too. So, we need good team members for that," Sara says. "And honestly, my team is excellent."

To learn more about ways to support patients, visit [MageeWomens.org/Support](https://www.mageewomens.org/support)



WINDOW SHOPPING FOR SCIENCE

HOW FASHION & WOMEN'S HEALTH RESEARCH MEET AT THE CLOTHES LINE

by Gina Edwards



Dr. Miguel Brieño-Enríquez loves to make people beautiful, from the inside out.

During the weekdays, Miguel, as he prefers to be called, is a researcher focused on reproductive aging at Magee-Womens Research Institute (MWRI). His work examining the fertility of the naked mole-rat — a creature that can live up to 37 years and reproduce throughout the entire course of its lifetime — explores how we might expand the reproductive window for human beings.

On the weekends, he heads from the lab in Pittsburgh's Oakland neighborhood to a shop in nearby Bloomfield where he ignites his flair for another passion: fashion.

Miguel regularly creates eye-catching window displays featuring the hottest items at The Clothes Line: a resale shop run by The Women's Auxiliary group, which is dedicated to giving back to MWRI. With the wares supplied by ongoing donations from dedicated donors and the staff comprised of volunteers, The Clothes Line offers clothing for everyday wear as well as luxury and designer items.

As Peggy Snavelly, president of the Women's Auxiliary explains, the group usually raises about \$100,000 a year that goes back to Magee. She credits the team of volunteers from the Women's Auxiliary that staff the store, and the donors who continuously provide generous donations to the shop, for the store's mission-driven success and laid-back atmosphere.

"It's fun to get to know people, clean out your closet, and raise money for Magee," Peggy says.



Some brand-new donated pieces have price tags in the thousands of dollars but sell for a fraction of that at The Clothes Line. Funds from clothing sales support Women's Auxiliary programs like Magee Auxiliary Research Scholar (MARS) and the Bright Star Award, which give newer MWRI researchers like Miguel a boost of funds to help them establish their initial data.

While Miguel, who grew up in both Mexico and Spain, volunteers his time for The Clothes Line, he also has professional experience designing window displays.

"I used to have a store in Barcelona — a clothes store — and we designed one-of-a-kind gowns and purses and things like that. So, it's something that I always liked," Miguel says. He discovered The Clothes Line after moving to Pittsburgh and asked if he could help.

"So lucky me, because ... they said 'OK, let's go.' And every time they give me a little bit more freedom to do stuff. I enjoy working with the clothes they have," Miguel says.

"Like really high-quality, high-end fashion clothes, brand new, with the tags."

When it comes to running The Clothes Line, Peggy is quick to applaud Betsy McAleer and Mary Lou Gatewood for being the true "powerhouses behind the operation." With the support of Women's Auxiliary volunteers, Betsy and Mary Lou manage the donations, inventory, promotions, and day-to-day operations of the shop — a behemoth task.

Along with "The Ladies," as Miguel affectionately refers to them, most Saturdays you can find Miguel changing out The Clothes Line front window with a new themed display, featuring one to two mannequins decked out in seasonal clothes and surrounded by vibrant accoutrements. From Pride month to the jungle to Christmas and Valentine's Day, the changing displays draw in new customers and passersby, helping even the most unique pieces, like a kimono, get scooped up quickly.

Miguel enjoys interacting with the customers, too. While he's at it, Miguel takes the opportunity to educate customers about

his research and thank them for supporting him through their purchases. Peggy, Betsy, and Mary Lou all agree that the collaboration has been beneficial for The Clothes Line, and they appreciate Miguel's dedication to the craft.

"I can't tell you how much we love Miguel," Peggy says. "He's just been such a delight to have. He's got this flair [for the windows] that we'd never be able to do."

"In this sense I have a community with all the ladies, and they care about the science. They care about the research. But in my case, they also care about me as a person."

Miguel adds that his being at the store helps them know where their money is going and humanizes him as a scientist for the patrons.

"It's perfect because it makes them understand that the money is going to someone real, something that is related to research, but that researchers are not these weirdos they look like in the movies," Miguel says, with the caveat, "Well, I'm weird, but not like in the movies."

However, Miguel almost pursued Hollywood-style dreams: before focusing on reproductive science, Miguel planned to go into plastic surgery — or making beautiful people.

"I was young and saw life in a different way," Miguel says. "Plastic surgery is amazing, but it is not the way I see myself trying to change people's lives."

So, Miguel decided to pivot his work to making people healthy as its own form of beauty. "You can impact how to protect people, to give them the best life span possible or health plan, and also it is something that really fulfilled me," he says.

Miguel's work at The Clothes Line links his reproductive aging research at MWRI to his love for fashion and aesthetic design and has made Pittsburgh feel a little more like home. Describing his relationship with The Clothes Line staff, Miguel says: "In this sense I have a community with all the ladies, and they care about the science. They care about the research. But in my case, they also care about me as a person."

FISCAL YEAR 2022

EVENT HIGHLIGHTS



2021 Race to Beat Women's Cancers participants getting excited for the event.

Pittsburgh Marathon: For the second year running, P3R — the power house behind some of Pittsburgh's largest races, events, and fitness programs — and Magee-Womens Research Institute & Foundation (MWRIF) united to support and empower women throughout their running and wellness journeys. MWRIF celebrated runners' accomplishments and inspired women to lead active, healthy lifestyles as the title partner of the Personal Record (PR) bell during the DICK'S Sporting Goods Pittsburgh Marathon and Health and Wellness Expo held April 29 to May 30, 2022.

The partnership gained momentum after the overwhelming success and sellout of the first-ever women's themed Ready.Set.MOVE. box in March of 2021, which celebrated International Women's Day and raised funds for the Girls on the Run Pittsburgh chapter.

"With our aligned missions and organizational goals, the partnership encourages women to prioritize

their health and well-being through movement," says Janice Devine, Vice President of Development for MWRIF. "We are thrilled with the response from the first women's-themed Ready.Set.MOVE. box and look forward to a second-edition release to celebrate International Women's Day next year."

As the DICK'S Sporting Goods Pittsburgh Marathon returned to a live start line in 2022, so did MWRIF. The partnership brings MWRIF back as an official charity of the Run for a Reason program in addition to sponsoring the PR bell throughout the weekend of events.

"It's an exciting time to expand and continue our partnership with MWRIF," says Troy Schooley, P3R's CEO. "Not only does the research institute inspire our runners to move and live healthier lives, but also empowers them to achieve new goals. With this partnership, MWRIF leaves a positive impact on both the lives and experiences of our runners."



NICU Family Reunion: Held annually at the Pittsburgh Zoo & Aquarium, the 2022 NICU Family Reunion gathered 450 people who have benefited from the Neonatal Intensive Care Unit (NICU) at UPMC Magee-Womens Hospital to share refreshments,

entertainment, crafts, and raffles. The reunion was hosted by UPMC Magee, Magee's Parent Advisory Council, and UPMC Children's Hospital of Pittsburgh. Guests were greeted by the NICU nurses and physicians who cared for them.

15th Annual Noah Angelici Memorial Golf Event:

Located in the Nemacon Woodlands Resort in Farmington, Pa., this annual outing brought together 144 people for a round of golf at this prestigious resort. Not only was a day of golf enjoyed but lunch, dinner, and prizes were included. Guest speaker Dr. Stephen Emery shared a beautiful fundraising story — his past twin patients, Cassandra and Irelynn, raised money at their elementary school by selling paper cutout daisies that represent twin-to-twin transfusion syndrome (TTTS). (See story on page 14). Proceeds benefited the Center for Innovative Fetal Intervention at UPMC Magee-Womens Hospital.

WCRC Fly Fishing Classic:

Participants enjoyed two days of amazing fishing and conversation at the HomeWaters Club in Spruce Creek, Pa. This annual event benefits the Women's Cancer Research Center (WCRC). The WCRC was developed in 2010 as a unique collaboration between the UPMC Hillman Cancer Center and Magee-Womens Research Institute. The WCRC's mission is to reduce incidence and death from women's cancers.

The Inaugural Race to Beat Women's Cancers 5K Run/Walk:

The first annual Race to Beat Women's Cancers was held on Sept. 5, 2021, at North Park, Pa. More than 1,000 people attended despite inclement weather, to honor those affected by breast, ovarian, cervical, and endometrial cancers. The event raised more than \$179,000 to advance women's cancer research and patient care.

Pars for Postpartum Depression Golf Outing:

At the Birdsfoot Golf Club participants enjoyed 18 championship golf holes, delicious lunch, hole-in-one prizes, and raffles. This touching event was created to bring awareness and resources to parents who experienced clinical depression during a postpartum period.

Clays for a Cure: Hosted by Home Depot and A Glimmer of Hope Foundation, the 11th annual Clays for a Cure event was held at the Seven Springs Mountain Resort Clay Course from August 11 to August 12, 2021. Participants enjoyed a clay shoot, dinner, and silent auction all benefiting breast cancer research at Magee-Womens Research Institute through A Glimmer of Hope Foundation.

Women of Influence: The winners of the 2022 Women of Influence awards were honored on May 25, 2022, at the Westin Pittsburgh Hotel. Presented by the *Pittsburgh Business Times*, this recognition celebrates 27 women across the city of Pittsburgh who have had a significant impact on the community. These women are making a difference in their companies, nonprofits, and communities in Southwestern Pennsylvania.

Swing for a Cure: Longue Vue Country Club Women's Association hosted their annual Swing for a Cure golf outing to benefit breast cancer research on June 28, 2022. This lively event raised more than \$15,000 this year. Over the past six years, this event has raised more than \$41,000.

Moon High School: Moon High School hosted their annual Pink Out in October. Students sold pink T-shirts and raised \$7,000 to date. (See story on page 26). These enthusiastic students have raised more than \$57,000 to support breast cancer patient care at UPMC Magee-Womens Hospital.

Community Fundraisers: More than 20 community members partnered with Magee-Womens Research Institute & Foundation (MWRIF) to raise a total of \$109,000. These community partners included Smail Auto, which raised \$15,000 for MWRIF during its Smail Auto Cares campaign. This partnership has yielded \$292,000 over the past nine years. Additionally, craft beer brewer and owner of Whitehorse Brewing, Mike Fahy, donated \$16,488 in 2021 for the sale of his "With You Always" coffee milk stout, created in honor of his late wife, Darcel. The beer has raised \$47,000 in the past three years for ovarian cancer research. In addition, Supercuts held their annual October Pink Out at their 32 locations in the Pittsburgh area. Two dollars from every haircut resulted in a \$2,500 donation for this year. In total this event has raised \$35,000 for breast cancer research.



FROM LOCAL TO GLOBAL: WOMEN WHO ROCK'S LA SHOW BUILDS BUZZ FOR MWRIF

by Gina Edwards



Crackling sounds of crowd chatter filled The Novo on a Los Angeles evening in May 2022. The Pink Carpet rolled out and the fans rolled in as the community gathered for a night of music with an extra boost — the evening's proceeds supported the nation's largest research institute dedicated to women's health: Magee-Womens Research Institute & Foundation.

Fresh off the tails of the October 2021 Women Who Rock (WWR) Pittsburgh show headlined by Rita Wilson, the all-female-fronted LA concert featured GRAMMY winner Aimee Mann and Latin GRAMMY winners Flor de Toloache, along with Emily Wolfe, Daisy O'Dell, and WWR Rising Star, Graciela.

United to rock the future of women's health, the lineup of artists continued a tradition that started here in Pittsburgh and is set to keep rolling throughout the country, and around the globe.

Melinda Colaizzi, WWR founder and CEO, says that the WWR LA show brought the energy and excitement from Pittsburgh to the West Coast. After five years of annual benefit concerts at the Hard Rock Café and Stage AE, and with the support of partner Gibson Gives, the team took on the task of delivering the show to a whole new audience. Melinda's prior experience and contacts working in the music industry in LA led WWR to choose the city for its first concert outside of Pittsburgh. In fact, the Recording Academy, which presents the annual GRAMMYS, played a key role in locating the LA show's star-powered emcee: Jordin Sparks.

"When the Recording Academy learned more about Women Who Rock and our efforts to support women in music, they got on board so quick," Melinda says. "We're so grateful that this cause resonated with [Jordin]. Once she emceed, she voiced a huge desire to be part of the movement with us."

As Melinda puts it, "The pink carpet took on a life of its own" in LA, with strong women lining up to share their health stories and voices. Buzz from media pickups in Entertainment Tonight and other outlets helped the WWR LA show set a precedent they were ready to repeat back home.

Just a few months after its West Coast appearance, the WWR team was back in action preparing for its October 2022 show in Pittsburgh — featuring emcee-turned-headliner Jordin Sparks. "Spending time with Jordin, it's easy to get how much she cares about women's empowerment and raising money for research," Melinda says. "WWR shows have such an amazing energy, and we're excited to be back in Pittsburgh."

Though the 2022 shows have ended, Melinda and the WWR team are already cooking up what's next.



Follow
[@officialwomenwhorock](https://www.instagram.com/officialwomenwhorock)
to be a part of the
movement that started
locally but is going global.



OVER THE MOON:

ANNUAL STUDENT-LED PINK OUT FUNDRAISER RAISES SUPPORT FOR BREAST CANCER RESEARCH AND HONORS SURVIVORS

by Gina Edwards

Every October, a sea of pink blankets the Moon Area High School football stadium. At the yearly Pink Out, pink is indeed everywhere — from the painted faces in the student section to the cheer squad’s pom-poms, to the matching T-shirts worn by hundreds of attendees. The Moon community’s event and fundraiser honors those touched by breast cancer while supporting research at Magee-Womens Research Institute (MWRI).

Championed by the students themselves — the cheer boosters, the football team, and band members — Moon’s annual Pink Out has gained steam since its inception in 2014. What began as a small fundraiser for a football player’s family member diagnosed with breast cancer is now a full-scale community effort, with students conducting most of the T-shirt sales. For Kellee Kanith, who has served as a Cheer Boosters board member for the past three years and is this year’s President, it’s a memorable and nostalgic cause she has enjoyed with her family.

“I just remember my own kids going to elementary school in their cute little Pink Out shirts, and we would buy them for the whole family,” Kellee says. “I have all the shirts from when they were little because this has been a tradition.”

Though the event happens in October, planning starts in July and is a team effort with the students. Jenn Stacy, who chairs the Pink Out committee for the boosters, sees the impact of the effort and the influence of survivors’ stories on the student volunteers. “I just saw a lot of unity amongst them and positive energy,” Jenn says. “I mean, really, it’s an uplifting kind of thing to honor survivors and you could see it out there.” Kellee echoes this sentiment, adding, “For our girls to see that you can have a setback, you can have a health problem, and you can be happy and move forward and be positive — that’s amazing.”

Each year, the group attempts to beat their previous total, and students often suggest new ideas to raise more funds, like selling Pink Out trinkets or holding sales competitions. “The community works so entirely hard on this, and it has become bigger and bigger each year,” says Kerry Sparks, varsity cheer coach. But for Kerry and others in the stadium, the fundraiser is only one piece of what makes the event special. Before the game, breast cancer survivors from the community are announced and honored on the field with the gift of a flower.

Among the 25 survivors honored this year was Kerry’s mom, a breast cancer survivor of 27 years. As they walked across the field together, Kerry reflected on those 27 years she has spent making memories with her mother.

“Every step you take when you’re walking with that survivor, it’s like, these are the steps that they’re taking that they gained from this event because of what we’re doing,” she says. Kerry believes that Pink Out will only grow larger in the future. “[The students] want to show the support to the survivors to know that the Moon community is behind them and supports them,” she says. “You can always count on us to support the hospital and research.”



Photo: Kerry Sparks

THE SEED OF AN IDEA GROWS

HOW MWRI IN ERIE IS SOWING NEW RESEARCH, COLLABORATIONS BEYOND PITTSBURGH

by Gina Edwards

Even big ideas start with the seed of a concept.

For Charles “Boo” Hagerty, President of the Hamot Health Foundation (HHF), developing Magee-Womens Research Institute (MWRI) in Erie, Pa., began with a conversation and an ambitious challenge. Through discussions with MWRI leadership, Boo learned that Erie was an ideal place to extend research happening in Pittsburgh by extracting data from different demographics, including rural individuals and intergenerational families.

But creating a satellite location there came with a hefty price tag: about \$25 million. “I said, ‘OK, let’s try,’” Boo says, responding to the estimate. “They were kind of shocked by that because usually that [figure] stops the conversation.”

Undeterred, Boo set out to raise the necessary funds, beginning with a single project: extending the Steve N. Caritis Magee Obstetric Maternal & Infant (MOMI) Database and Biobank to Erie. After the Hamot Board of Corporators, a group of 350 business leaders, funded the MOMI expansion, the momentum began to take shape.

In 2018, the Erie Community Foundation (ECF) unveiled a \$30 million framework that included a call for large-scale grant proposals for transformational projects, and HHF and MWRI decided to apply. They engaged local leaders such as David Gibbons, president of UPMC Hamot Hospital, and the chancellor of Penn State Behrend, Dr. Ralph Ford, to get on board as well.

While HHF and MWRI wanted to advance and expand clinical research, trials, and services, ECF sought to add jobs to the local economy, and Penn State Behrend wished to broaden their major offerings. As Boo remembers, “Everyone had a different motivation, and all of them aligned. It came together.”

The \$6 million awarded by ECF was the largest ever in its 84-year history and was a critical piece of the combined \$26 million capital stack raised by the collaboration. Those funds supported building three labs and hiring of more than two dozen people.

A key part of the efforts now in motion at MWRI in Erie include seed grants, or small-scale funding to boost new research projects. Seed grants allow researchers to gain critical data that underpins future proposals to entities with larger funding capacities like the National Institute of Health (NIH).

“Erie was a natural extension. We’ve spent a decade building a robust clinical subspecialty practice in women’s health here,” Dr. Zyczynski says.

“The ultimate goal is to get enough seed grants going, get enough new projects going, and starting our own research here,” Boo says. “The hope is to attract researchers who want to live in and become part of the Erie area and pull in national grants that continue to lift the projects and provide new employment opportunities in the community.”

Dr. Halina Zyczynski, Medical Director of MWRI in Erie and Magee-Womens Specialty Services at UPMC Hamot, echoes Boo’s sentiments about the potential impact in the area.

“Erie was a natural extension. We’ve spent a decade building a robust clinical subspecialty practice in women’s health here,” Dr. Zyczynski says. “Our clinician scientists are committed to delivering evidence-based care and equally passionate about creating that evidence through research. We know when women are healthy, families are healthy, and communities are healthy. It’s wonderful to know that MWRI investigator-led studies will now also represent the women of Erie.”

Since opening the Clinical Translational Research Center and labs, the MWRI Erie staff have secured over 500 informed consents for study participation and specimen donations to the MOMI Database and Biobank, demonstrating the enthusiasm in Erie for participating in research. Currently, there are 13 clinical and translational trials at MWRI in Erie — including four seed grant projects, with \$100,000 awarded to date. Many of them include collaborations with Penn State Behrend.

“There could be a breakthrough that happens and one of these labs here in Erie that changes the world,” Boo says. “We think of this as a global, profound impact that we could have with this brilliance. We are part of something huge now.”

Looking toward the future, Boo is excited to watch MWRI in Erie continue to flourish.

“The full story hasn’t been told yet, but I’m excited about growth,” Boo says. “More partnerships and researchers getting together and talking about what’s possible.”



PROJECT

Using environmentally realistic PCB exposure levels to estimate the risk of breast cancer development in Erie County residents

Role of signal-induced oxidation of ERK in substrate selection important for cell migration

Exploration of the Asymptomatic Bacteriuria Knowledge Gap through Online Crowdsourcing and Patient Stakeholder Perspectives

Multifunctional Bio-based Polyurethane Smart Mesh for Treating Stress Urinary Incontinence

PRIMARY INVESTIGATORS

Adam Simpson, PhD
Ashley Russell, PhD
Jeremiah Keyes, PhD
Samuel Nutile, PhD

Co-Investigator:
Ronald Buckanovich, MD, PhD

Jeremiah Keyes, PhD
Carola Neumann, MD

Megan Bradley, MD

Co-Investigators:
Melanie Hetzel-Riggin, PhD
Christopher Shelton, PhD

Samy Madbouly, PhD

Co-Investigators:
Amanda Artsen, MD
Pamela Moalli, MD, PhD

GETTING TOGETHER TO GIVE BACK

HOW WOMEN'S GROUPS SUPPORT MWRI & UPMC MAGEE

by Gina Edwards

Support from the community fuels Magee-Womens Research Institute (MWRI) and UPMC Magee-Womens Hospital every day. Three groups that support both MWRI and UPMC Magee include the Volunteer Service Board, The Women's Auxiliary, and The 25 Club. Year after year, these groups come together to give back in special ways

Volunteer Service Board | Karen Cooper, President
Created in 1940, the Volunteer Service Board (VSB) is a group of volunteers serving throughout UPMC Magee-Womens Hospital. With monies generated from managing the hospital gift shop, it funds proposals for different hospital needs.

Karen Cooper, President of the VSB, first got involved as a social worker at UPMC Magee — a position she held for 23 years.

"It's really an honor to be part of this process and help the hospital with projects that are very important to the staff, patients, and physicians," Karen says.

The VSB begins reviewing proposals in October and determines what will be funded by December. The projects funded by the VSB include:

- **Obstetric Crisis Training:** two simulation mannequins and a simulation baby
- **Patient Support:** dignity robes for oncology patients
- **Security:** trained German Shepherd dog, Igor, including supplies for one year
- **Spiritual Care:** books and pamphlets
- **Translation Services:** iPads with necessary software and language resources

For Karen and all of the board members, these projects are important because they can benefit the patient experience. Membership in the VSB is currently open.

The Women's Auxiliary | Peggy Snavelly, President
The Women's Auxiliary of UPMC Magee-Womens Hospital dates to 1937 when it was established by Jessie Turnbull to meet the changing needs within the hospital. The Women's Auxiliary considers and approves funding recommended by the leadership that are most compatible with the goals of the group.

Early Women's Auxiliary-financed efforts included social services projects and an education program for new mothers at UPMC Magee. In postwar years The Women's Auxiliary financed remodeled bedrooms in the nurses' home, and 18 new labor and delivery suites.

Historically, The Women's Auxiliary operated two businesses that raised funds: the baby picture program at UPMC Magee and The Clothes Line, a resale shop opened in 1949 and now located in Bloomfield, Pa. (See story on page 19)

Peggy Snavelly, current president of the Women's Auxiliary, credits The Clothes Line workers — particularly, Betsy McAleer and Mary Lou Gatewood for "working very hard and putting their heart into the store to keep it running." The entire shop is staffed by volunteers.

By 1986, the group started a research endowment and established the Scott L. Williams Breast Care Center. The Women's Auxiliary continued to fund hospital projects related to UPMC Magee's Breast Care Center and the NICU for years.

Then in 2008, The Women's Auxiliary began to shift its focus away from brick-and-mortar projects toward research on future generations. The MARS and Bright Star programs, which support researchers at Magee-Womens Research Institute, exemplify the direction in which The Women's Auxiliary is headed. Past research funding recipients have included Dr. Miguel Brieño-Enríquez, Dr. Eldin Jašarević, Dr. Mellissa Mann, and Dr. Ronald Buckanovich.

Reflecting on her involvement in The Women's Auxiliary and The Clothes Line, Peggy says that it's been a win all around.

"Honestly, as a volunteer working at The Clothes Line, we are fortunate," she says. "Not only do we raise funds for women's health at MWRI, but we can donate our old clothes, shop for ourselves, and meet nice people. Truly a win-win opportunity."

The 25 Club | Penny Holden, President | Dani Grego, 33-Year Member
The Twenty-Five Club has supported medicine, neonatal research, and fetal intervention at UPMC.

On Sept. 21, 1939, Lillian Reese, along with 24 other charitable women gathered for a scientific presentation from a local researcher, which led to subsidizing an attending physician in the fever-therapy department of Children's Hospital. Hence, "The Twenty-Five Club" was founded.

Patti and Paul Matty began fundraising for the Neonatal Intensive Care Unit (NICU) in 1977 by holding a garage sale in their home. The sale eventually moved to South Park Fairground and became widely known as "The Sale in The Park." For 15 years, all 25 Club members participated, along with their families, doctors and their spouses, and many devoted friends.

One of the devoted members, Ann Kerr, decided to set a goal to establish a \$1 million account; so, as she put it, the members did not have to work so hard. Ann accompanied her husband on his business trips around the world and purchased antiques, artifacts, important works, and collectables that were auctioned at an annual event at The Duquesne Club.

In 1954, The 25 Club purchased the first Thermo Control Incubator used in Pittsburgh. In 1969, The Neonatal Intensive Care Unit (NICU) was donated to Magee-Womens Hospital and was the only NICU in Western Pennsylvania and one of only a few in United States.

In July 2008, under the guidance of Carol Massaro, President, The 25 Club established the "Twenty-Five Club Endowed Chair in Newborn Medicine" to be held by Dr. Gary Silverman. This \$2,000,000 chair was achieved with matching funds by UPMC. In 2010, Dr. Watchko was awarded funds for research and treatment to prevent brain damage in newborns with severe jaundice.

The 25 Club has supported additional research projects at Magee-Womens Research Institute over the years, including Dr. Yoel Sadovsky's placental immunity project and Dr. Stephen Emery's work in diagnosis and treatment of Twin-to-Twin Transfusion Syndrome (TTTS). The 25 Club also provided Dr. Emery funds for in utero repair of Fetal Spina Bifida and supported Dr. Thomas Diacovo's fetal blood bank.

Many members have a heartfelt connection to The 25 Club. Michel Franklin spent the first three months of her life in the NICU. Penny Holden, the current president, has a strong connection to UPMC Magee after giving birth and her mother having surgeries at UPMC Magee.

Penny says, "We are so fortunate to have UPMC Magee here in Pittsburgh and the associated Research Institute. The things they are doing impact the country and the world," she says. "What is really rewarding for all of us is that the funding we provide for research is far-reaching."

For more information on the Volunteer Service Board, including how to volunteer, contact Karen Cooper at karenmartha@yahoo.com

For more information about The Women's Auxiliary, visit ClothesLineResale.org

For more information about The 25 Club, visit The25Club.org

FUELING ESSENTIAL RESEARCH IN WOMEN'S HEALTH

GRANTS FROM JULY 1, 2021 - JUNE 30, 2022

31 PRIMARY
INVESTIGATORS
FUNDED

49 GRANTS
AWARDED

\$42,492,710

TOTAL DOLLARS
IMPACTING RESEARCH



HOW YOU CAN IMPACT RESEARCH

With your support, we can further the world-class research at Magee-Womens Research Institute. Improve essential patient care at UPMC Magee-Womens Hospital, our clinical partner. And expand ongoing education for our valued staff at both institutions.

- CASH**
Contributing cash is the easiest gift and provides the maximum tax deduction while also making an immediate impact for Magee-Womens Research Institute & Foundation (MWRIF).
- BEQUESTS AND BENEFICIARIES**
Naming MWRIF in your will, living trust or as a beneficiary of your retirement plan allows you to help MWRIF without impacting your income today.
- IRA CHARITABLE ROLLOVERS**
If you are age 72 or older, you can make a tax-free gift from your IRA directly to MWRIF while satisfying your required minimum distribution. This is a simple and popular way to support MWRIF without reducing your current cash flow and could lower your taxes.
- APPRECIATED STOCKS**
Donating securities that have increased in value directly to MWRIF allows you to possibly avoid capital gains taxes and maximize your charitable deduction.
- LIFE INSURANCE**
Naming MWRIF as a beneficiary of an existing life insurance policy, or creating a new policy specifically to benefit MWRIF, allows you to build a legacy, often with a relatively small annual premium payment and without diluting your estate.

When considering charitable giving, you should talk with your tax, legal, and financial advisors; MWRIF does not render these services.

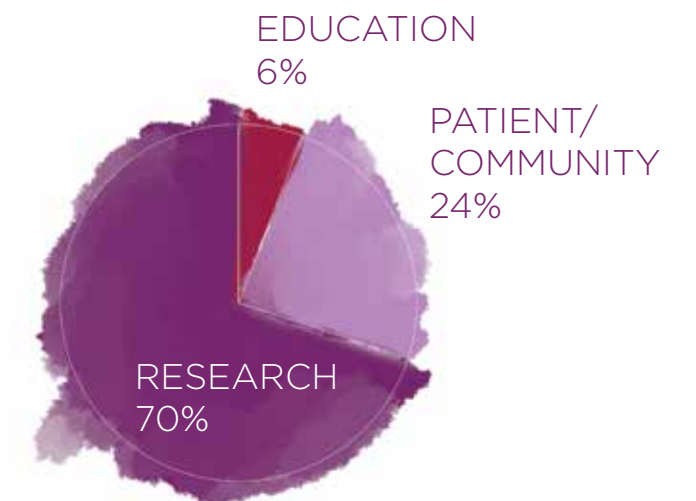
To learn more, contact Janice Devine, Vice President, Development at devineja@mwri.magee.edu or 412-641-8973.

YOUR GENEROSITY AT A GLANCE

**TODAY'S GIFT CAN SPARK
TOMORROW'S BREAKTHROUGHS**

July 1, 2021 - June 30, 2022

Thank you for your support. Every attempt has been made to ensure the accuracy of this information. If you have any questions, please contact Karen Potter at **412-641-8968** or potterk2@mwri.magee.edu.



DONATIONS BY FUND

Education	\$277,722
Patient/Community	\$1,189,262
Research	\$3,470,599

SUPPORTING THE NEXT GENERATION OF WOMEN'S HEALTH RESEARCHERS

MWRI MEMBERS' MINORITY STUDENT SUMMER SCHOLARSHIP FUND CREATES OPPORTUNITIES FOR STUDENTS

by Gina Edwards

A core value at Magee-Womens Research Institute (MWRI) is mentoring: coaching the next generation of tenacious and creative scientists and nurturing their interest in women's health research.

As a national leader in this field, MWRI must ensure that future leaders are as diverse as the populations of women served by them. By advancing diversity in training the next generation of scholars, MWRI aims to reduce disparities in women's health research and improve the science.

To that end, in October 2021, leaders at MWRI spearheaded the creation of the MWRI Members' Minority Student Summer Scholarship fund (M3S3), which provides support for underrepresented students to participate in MWRI high school and college internship programs.

Dr. Yoel Sadovsky, Dr. Judy Yanowitz, and Dr. Tony Zeleznik made a substantial leadership gift commitment to establish the endowed fund and encouraged all MWRI members to join them in investing in the future of these deserving students by donating to the program fund.

"Our faculty are excited each year when the summer interns arrive, open-minded and eager to learn from our dedicated mentors," says Dr. Sadovsky. "This is a special, grassroots effort, with all of us coming together to create this opportunity designed to increase diversity in our field, starting from our most junior trainees."

Their appeal was a success. A donor pool of 42 individuals that included primary investigators, researchers, emerging researchers, administrators, and board members from throughout MWRI, raised more than \$40,000 to provide long-term funding for the M3S3 program.

By uniting to advance the diversity and inclusion of underrepresented groups in science MWRI members are equipping those in the next generation of women's health scientists to keep our research moving forward, while reflecting the diversity of the populations we serve.

To learn more and support the M3S3 Scholarship, visit MageeWomens.org/M3S3

GENERATIONAL DONATIONS

Dr. Aarons & Dr. Schmeltz
 Laura Albensi
 The Honorable Donetta
 W. Ambrose
 Dr. Carey D. Andrew-Jaja
 & Mrs. Lorna Andrew-Jaja
 Michael J. & Jennifer L. Annichine
 Linda & Ray Antonelli
 William & Betty Archer
 W. Harry Archer*
 G.F. Kleiner
 Debra S. & Michael C. Barbarita
 Margaret Ritchie Battle
 Louis A. Baverso & Susan C. Harlan
 Troy L. & Jennine Beaver
 Dr. Richard & Luisa Beigi
 Elaine M. Bellin & Phyllis D. Coontz
 William & Vivian Benter
 Dr. Saul R. & Rhonda C. Berg
 Carol F. Berger
 Sylvia J. Bernassoli
 Dr. Harry S. Binakonsky*
 Marianne Bokan-Blair & David Blair
 H.V. Blaxter III and Bonnie Blaxter
 Nadine E. Bognar*
 Thomas & Theresa Bone
 Leslie & Matthew Braksick
 Suzanne & Jim Broadhurst
 John R. Brown III
 James & Noel Browne
 Dr. Adam & Dr. Jill Brufsky
 Seth & Jodi Brufsky
 Estate of Margaret N. Calmes
 Dr. Steve N. Caritis
 Ruth M. Casey*
 Donna & Kimbel Clackson
 James E. Cochran
 Carrie Coghill & Michael Sullivan
 Harold M. Cohen*
 James Colker*
 Drs. John T. & Susan Comerci
 Dr. Stephen & Christianne Corey
 James E. Cornelius
 Cary D. Cowden
 Kate & Stephen Crawford
 Deborah A. Cunningham
 Sam & Heather D'Alesandro
 William F. Dapper
 Leslie C. Davis & Abe Leizerowski
 Melva E. Deitt
 Dr. James N. Dill*
 Karen M. & Joseph V. DiVito Jr.
 Pamela D. & Anthony J. Dodge
 Dr. Gabriel & Rosemary Durkac
 Dr. Daniel I. Edelstone
 & Dodi Walker Gross
 Dr. Robert & Antoinette Edwards
 Joan Ellenbogen
 & George Handelsman
 Alex Ellenbogen*
 Eva Ellenbogen*
 Laura E. Ellsworth
 & Bruce Teitelbaum
 Felicia Emanuel
 Dr. Dennis & Denise English
 William F. Fabrizio

Alan & Elizabeth Finegold
 Marcella L. Finegold
 Melanie & Christopher Finnigan
 Dr. John M. Fisch
 & Dr. Mary Ann Hynes
 Kimberly & Curtis Fleming
 Dr. Robert & Ann Fronduti
 Dr. Dale & Rosemary Fruman
 David & Lauren Garraux
 Dr. Brian & Rosemary Generalovich
 Dr. Iacopo Gentilini
 David & Donna Gerson
 Irma E. Goertzen
 Estate of Marcella C. Goldberg
 Thomas & Ellen Golonski
 Shirley Gordon*
 Kelly R. Gray
 Stanley* & Marcia Gumberg*
 Joseph Clinton &
 Kathleen Celko Guyaux
 Lillian M. Hachmeister*
 Mary Anne & Howard Hanna
 Susan C. Harlan & Louis A. Baverso
 Jason & Vanessa Harrison
 Susan & Michael Harter
 Grayson G. Heard
 Dr. Richard* & Mrs. Hemphill
 The Heppenstall Family
 Dr. L. Michael & Lynne Hill
 David Hillman
 Dr. W. Allen & Joan Hogge
 Albert A. Hoodwin
 Estate of J.R. Hunter
 Dr. Jerome M. Itzkoff
 & Dr. Barbara E. Zawadzki
 Dr. Gary Jacobson
 & Susan Berger Jacobson
 Estate of Mary Jernberg
 Margaret P. Joy
 Dr. Anisa I. Kanbour*
 John & Joanne Kane
 David & Frances Kaplan
 Lois & Todd Karran
 Dr. David L. & Mary Lou Katz
 Dr. Joseph L. Kelley III
 & Karen Kelley
 Paul & Margaret Kepple
 Dr. Gauri & Jan Kiefer
 Dr. Mark A. & Virginia C. Koenig
 Robert Y. & Susan R. Kopf
 Pamela Joan & D. Scott Kroh
 & Carol Paynter
 Dr. Carolyn J. Kubik
 & Dr. Steele W. Filipek
 Kathy L. Kunschner
 John Kuzmishin
 & Dr. Janet Harrison
 Raymond & Stephanie Lane
 Daniel R. Lattanzi, M.D.
 Dr. Adrian V. Lee
 & Dr. Steffi Oesterreich
 Christopher & Mary Beth Leech
 Edward & Kerri Lettieri
 Dr. Arthur S. Levine
 & Linda Melada
 William E. Lewellen III*

Dr. Frank Lieberman
 & Dr. Beverly Barkon
 Elsa Limbach
 Debra & Kurt Limbach
 Deborah W. Linhart
 Estate of Margaret Love
 Deanna Love Rutman, M.D.
 Robert Luft
 Susan & William MacDonald
 MacGilvray Shiras Trust
 Dr. Trevor & Antonia Macpherson
 Malakoff Family

Patricia J. Marley
 Dr. Jerry & Jean Martin
 Cordelia S. May*
 Marjorie G. Mazer
 William & Lynn McCargo
 Sarah J. McCarthy
 & Ralph R. Reiland

Dr. John & Denise McCarthy
 Janet M. McCarthy*
 Joyce D. McCartney
 Dr. Kenneth S. McCarty*
 & Dr. Berrylin J. Ferguson
 Estate of Pamela G. McClintic
 Bill & Kiki McConnel
 Elisabeth B. McCullough
 Putnam* & Rosamond McDowell
 Susan & Stephen McGalla
 Maribeth & Mark McLaughlin
 Dr. Wendy & Dr. James Craig
 Pamela Moalli
 Dr. Donald & Sahli Mrvos
 Gwendolyn C. Murphy*
 Murhaf Naddour, M.D.
 Paul H. O'Neill Jr.
 Elliott S. Oshry
 Peter T. & Kathryn A. Paladino
 Dr. Ashok & Albert Panigrahy
 Charles H. Parker III
 Stephen L. Parker
 Estate of Helen E. Parr
 Demetrios & Kathleen Patrinis
 Perf. Pathology Education
 Bill & Helana Pietragallo
 Dr. Mary Ann Portman
 & Barrie Lucas
 Henry* & Helen Posner*
 Donald & Dorothy Povejsil
 The Rackoff Family
 Janice & Don Rea
 Mary Richter
 Dr. Paul M. Rike*
 Mary E. Roberts & Don Feurzeig*
 Dr. James M. Roberts
 & Jane M. Butler
 Brooks & Jean Robinson
 James & Elin Roddey
 James & Sharon Rohr
 Margaret & Michael Rosenzweig
 Anthony & Karen Ross
 K. Scott Roy
 Dr. Marvin C. Rulin
 Cindy & Andy Russell
 Dr. Souma* & Dr. Rudy Sabbagha*
 Dr. Yoel & Elena Sadovsky
 Dr. E. Ronald & Mrs.* Salvitti
 J. Faye Sampson
 Amber R. Samuel, M.D.
 Scott & Carolyn Sanford

Mark & Shelley Scher
 Fern & Dr. Stephen Schwartz
 Arthur & Debbie Scully
 Arthur M. Scully Jr.*
 Herbert & Barbara Shear
 John Paxton Siebart
 Patricia & Alan Siger
 Eileen Simmons
 William & Gayle Simpson
 Estate of William Slater
 Tonja Smith
 Dr. David A. & Anica R. Smith
 Henry & Adelaide Smith
 Margaret & Stephen Snavely
 Irene C. Snyder*
 Dr. Francis X. & Lenette M. Solano
 Dr. Richard* & Marion Sorce
 David J. & Dr. Francie Spigelmyer
 John A. & Patricia Staley IV
 Dr. Sandra & William Stout
 Dr. William H. Straub
 Thomas W. & Bonnie Strauss
 Kathryn Ketcham & Robert Strong
 Dr. Michael & Linn Swanson
 Dr. Richard & Rhea Sweet
 Henry Thiemann
 Dr. Robert & Portia Thompson
 Chad Tomosovich, Esq.
 Estate of Leonie M. Torsiello
 Bradley & Darlene Scarpaci Violetta
 Dr. Kathleen Waleko, Ph.D.
 Judith T. Walrath*
 Molly E. & Joseph C. Walton
 James & Ellen Walton
 Jonathan & Shannon Marie Weiss
 James A. West Jr.
 John* & Maureen White
 Lois A. Wholey
 Joseph* & Ligia Wiegand
 Estate of Kathleen G. Wood
 Sarah & Robert Woodings
 Dr. Vonda J. Wright
 Samuel & Anne Zacharias
 Dr. Anthony J. Zeleznik
 Jane W. Zimmerman
 Susan T. Zitelli*
 Mary Goldman Zubrow
 Dr. Halina M. Zyczynski
 & Geoffrey J. Tolge

*Deceased



We honor the donors who have supported Magee-Womens Research Institute and UPMC Magee-Womens Hospital with gifts of \$10,000 or more since 1977. These gifts have transformed the landscape of women's health research, education, and patient care at Magee.

INDIVIDUAL DONORS

MAGEE SOCIETY

FOUNDER'S CIRCLE (\$10,000 AND UP)

Dr. Carey D. Andrew-Jaja
& Mrs. Lorna Andrew-Jaja
Michael J. & Jennifer L. Annichine
Margaret Ritchie Battle
Thomas & Theresa Bone
Dr. Adam & Dr. Jill Brufsky
Seth & Jodi Brufsky
Dr. Robert & Antoinette Edwards
Joan Ellenbogen
& George Handelsman
Margaret P. Joy
Lois & Todd Karran
Jane Klimchak
Dr. Arthur S. Levine
& Linda Melada
Elyse Levkulich
Elsa Limbach
Paul H. O'Neill Jr.
Margaret & Michael Rosenzweig
K. Scott Roy
Dr. Yoel & Elena Sadovsky
Margaret & Stephen Snavely
Dr. Sandra & William Stout
Chad Tomosovich, Esq.
Patricia & Sigmond John Whitehill
Dr. Anthony J. Zeleznik
Gregory & Karen Zovko

TRUSTEE (\$5,000 - \$9,999)

Kristina Anetakis-Gzikowski
G.F. Kleiner
Elaine M. Bellin & Phyllis D. Coontz
Jennifer & Ralph Bingham
Elliott & Lucy Burkland
William & Pam Burkland
Brian W. Carlin, M.D.
Carrie Coghill & Michael Sullivan
Amy Flynn
Dr. Robert & Ann Fronduti
Iacopo Gentilini, Ph.D.
Kelly R. Gray
Paul & Margaret Kepple
Pamela Joan & D. Scott Kroh
& Carol Paynter
Dr. Adrian V. Lee
& Dr. Steffi Oesterreich
Bill & Helana Pietragallo
Janice & Don Rea
Dr. James M. Roberts
& Jane M. Butler
Amber R. Samuel, M.D.
Dr. Hallie E. Savage
Stephen & Fern Schwartz
Patricia & Alan Siger
Donald Smargiasso
Dr. David A. & Anica R. Smith
Carol Tillotson
William Walker
Dr. Halina M. Zyczynski
& Geoffrey J. Tolge

PRESIDENT (\$2,500 - \$4,999)

Karen Amoroso
Ted Bovard
David & Helene Colaizzi
Joe Colaizzi
Sam & Heather D'Alesandro
Ryan Dean
David & Lauren Garraux
Jason & Vanessa Harrison
Tim Hudak
Robert A. Hutton
Dr. Kyle & Jennifer Orwig
Mary Richter
Scott & Carolyn Sanford
Kurt Schnieders
David J. & Dr. Francie Spigelmyer
Verena P. Turner
Bruce & Barbara Wiegand
Rob Wise

BENEFACTOR (\$1,000 - \$2,499)

Laura Albensi
Donna Aldrich
The Honorable Donetta
W. Ambrose
James Ball
Dr. Richard & Luisa Beigi
Dr. Saul R. & Rhonda C. Berg
Sheila Bigelow
Ronald Black
H.V. Blaxter III and Bonnie Blaxter
Matt Bogolin
Kristin Bonasso
Vicky J. Brilmyer
Naval Nuclear Laboratory
Dr. Donald & Jane Burke
Dr. Timothy P. & Lisa A. Canavan
Dr. Renee Caputo
& Dr. Luis Vaccarello
Harumy Castillo
Caryl Cohen
Dr. John T. & Dr. Susan Comerci
Nick Cosentino
Melva E. Deitt
Michael Dudek
Ellen Dugan
Dr. Gabriel & Rosemary Durkac
Dr. Daniel I. Edelstone
& Dodi Walker Gross
Kim Edvardsson
Dr. Dennis & Denise English
Karen Evans
William F. Fabrizio
Michael Fahy
Kim Fleming
Kim & Curt Fleming
Justin T. Flook
Jane France & Chris Allison
Sharon & Robert Gallagher
Lukas P. Georgiadis
Samuel Gerber
Joanna German
James Ginocchi
Beverly M. Gocal
Robert Goldberg

Jeff Guidos
Dr. Milton & Daphne Hamblin
Elizabeth & Timothy Hazel
Madison Hensel
Jon Hurwitz
Taleesha & David Jackel
Cynthia Jones
Arpit Kaul
Judy Keever
Timothy King
Kristina Kloman
William Knobloch
Mary R. & Barry D. Kukovich
Sherrie Lane
Daniel R. Lattanzi, M.D.
Robert S. Markwell
Joedi Mascioli
Joyce D. McCartney
Ann M. McGuinn
Michele Michaels
Michael Micsky
Rebecca Mitchell-Perry
Anissa Moriarty
Abhay Nayak
Sarah Olbrich & Christopher Frenie
Vivien L. Pan, M.D.
Panucci's Promise
Demetrios & Kathleen Patrinos
Jeff Petrunak
Patricia Porter
Dr. Mary Ann Portman
& Barrie Lucas
William & Bethany Ratcliffe
Elizabeth A. Roberts
& Dr. Michael McKnight
Mark Rossi
Dr. Robert T. & Jean M. Simmonds
Alexandra Smith
John A. & Patricia Staley IV
Dr. Urvashi Surti
Dr. Michael & Linn Swanson
Joseph E. & Karen Thurby
Joseph Tucker
Nicole L. & Ryan M. Tyson
Laurie & Charles Van Swearingen
Janet Viaropulos
Bradley & Darlene Scarpaci Violetta
Dean Walters
Michelle Walters
David Whiteman
Martin Wijkstrom
Dr. Judith Yanowitz
& Dr. Harry Hochheiser

HUMANITARIAN (\$500 - \$999)

Dr. Carol G. & Dr. Francis M. Altman
Gina M. & James Anetakis
Chris & Sarah Armstong & Mary
Anne & Paul
Janet & Barry Balas
Deborah & David Baron
James Beck
Autumn Becker
Breanna Bell
Sue Bell
Carol F. Berger

Dr. Robert & Nancy Bernstein
Ms. Lynne Bingham
Harry Boben
Patrick Bonasso, M.D.
Patrick Bonasso
Natalie Brieger
Elizabeth Britt
Alyssa Brown
Helen Hanna Casey
Eric Cepeda
Chautaugua Lake Neighbors
Richard Chesnik
James E. Cochran
Dr. Madeleine Courtney-Brooks
& Zachary Floberg
Erin Daley
Greg Darkenwald
Dr. Kathryn Daugherty-Penn
& Dr. William Penn
William E. Davis
Ralph Deaver
Megan DelVecchio
Laura & Tim Derdenger
Christina Dickerson
Ralph J. Egerman
Vivien L. Pan, M.D.
Lisa & Benjamin Ewing
Thomas & Carol Eyles
Samuel Fee
Robert Ferris
Lisa & Stephen Fowler
Rebecca Francus
Jenna French
Judi Friedberg
Bob Fronius
Christine A. Galket
Lisa Gavlik
Stuart Gelbard
Laurie & Geoffrey Gerber
Alexander & Jordan Guaraldi
Ian H
Kristian Habenicht
Beverly Hammers
Chris Hayner
Susan Heher
Mary Ann Heneroty
Monica Herrera
Rock Heyman
Jaime Hindlin
Rani Hoff
Lindsay P. & Jeanne Howard
Dr. Bryan & Sandra Huber
Steve Ilnicki
Melonie Jackson
Richard Johnson
Joshua Jones
Angie Kao
Kobra Karimkhani, M.D.
Lisa Keck
Jerry Kline
Ivor Knight
Dr. Mark A. & Virginia C. Koenig
Elizabeth L. Kofmehl
Elizabeth E. Krisher
Amanda Laubenthal
Lawrence & Lynn Lebowitz
Debra Lhota
Debra & Kurt Limbach

Deanna Love Rutman, M.D.
Melissa Loveranes
Joseph Luchtan
Joanne Luconti
Lesley Mann
Leslie Mann
Melissa Mann
Cara Mia Manzella
Michael Mascaro
Carol McCarthy
Michael S.
& Jennifer M. McDonough
Daniel Medina
Rozaanne Meservey
Joan G. & Kelly N. Metzgar
Pamela A. Moalli, M.D., Ph.D.
Zachary Morrow
Byron Najera
Dana Nelson
Dr. Tony Parks
Karen Pesich
Lisa B. Peters
Dr. Beth M. Piraino
Pamela Pitell
Derrick Poole
Jackie Popovec
Karen D. Potter
Dr. Robert & Catherine Powers
Amber Raspberry
Melvin Reichenbaugh
Eric Reyes
Lauren Richards
Ashleigh L. Riehl
Bert & Susan Rockman
James Rosenwald
John Ruscetti
Miguel Salmeron
Molly Sauereisen
A. William Schenck III
& Mikell Schenck
Danielle N. Seitz
Jeremy Shearer
MacKenzie Smith
James R. & Cheryl B. Snyder
Jim Spencer
Michael Sukitch
Tracy Symons
Mark E. Thompson, M.D.
Dr. Robert & Portia Thompson
John Titus
Deborah M. & James M. Turner
Ana Maria Valle
Julian Valozzi
Daniel Van Kirk
Brian Waldron
Cheryl Walters
Dr. Margaret L.
& Peter M. Watt-Morse
Britton Wean
& Jarrett Orzechowski
Karen White
Mark Williams
Ashley & Andrew Wozniak
Kimberly & Edward Yackovich
Jenna Young
Michael Zambo
Constance Zotis

INDIVIDUAL DONORS

FRIENDS OF MAGEE (UP TO \$499)

Kristen L. Abels
Karen Acheson
Barbara Adair
Heidi Adams
Alexis Adams
Brian Adamson
Astrid Ahler
Patricia A. Aiello
Shihab Al Subhi
Judith & Anthony Albert
Sara Albert
Jill Albrecht
Anja Aleksic
Dawn Alexander
Jane E Alexander
Sarah Allan
Michelle Allen
Liza & Jonathan Allen
Jackie Allen
Fernanda Alvarado
Michael Amadeo
Debbie Amatangelo
Heather Ambrose
Christine Amore
Tessin Amoscato
Eunice C. Anderson
Ginger Anderson
Carolyn L. Anderson
Jarrod D. Ansell
Jim & Janel Anthony
Debra Antonucci
Nancy Apel
Burton Appel, M.D.
Gordon Appell
Leslie Appiah, M.D.
Don & Deborah Appleman
Juan Arbelaez
Mr. Jessica Argiro
Joann Armine
Elaine Armstrong
Julie Arnheim
Sarah Arnold, M.D.
Nancy A. Arthur
Amanda Artsen, M.D.
Sara B. & Jeff Arvay
Vivek Aseeja
Laura Ashworth
Ruth & David Atkinson
Genevieve Attie
Michelle Aubele
Amber Auchey
Nancy & Raymond Babos
Leyah Babyok
Karen A. Backeris
Morgan Baden
Aubrey Baehr
Andrea Baellow
Mary Baird
Rebekah Baisch
Angela J. Baker
Joella Baker
Alissa Baker
Cynthia Balestrino
Maureen Balko
Adam M. Balko
Nicole Ballay
Kelsey Balmelli
Blanca M. Balta
Dr. Jeffrey & Marianna Balzer

Edward Balzer
Mary Carol Balzer
Janet F. Ban
Kimberly Bangs
Lauren Bomiveo
Abraham C. Banks, Esq
Steve Barber
Leslie Barclay
Brian Adamson
Natalie Rogers
Kaila Barker
James Barner
Gloria Barnes
Mozell Barnes
Jan N. Barnes
Tasha Barnett-Callis
Carla C. & Timothy J. Barnhart
Pamela Barnhart
Bill Barnhart
Marisa Barone
Rachel Barragan
Rory Barratt
Nicole Barrett
Benjamin Barron
Stephanie Barry
Leslie Barton
Cynthia & Joseph Bartoszewicz
Debbie Basinger
Ron Bauer
Nancy & Nadav Baum
Melissa Baum
Randall G. Baumann
Susan Baumann
Ed Baun
Sarah Bazzetta
Laurie & Raymond J. Bean
Elizabeth Beard
Jennine Beaver
Troy L. & Jennine Beaver
Brad Beck
Deborah Becker
John Becker
Macey Beckert-Foster
Ellen Beckjord
Jennifer Beckjord
Christine Beckwith
Danielle D. Bednar
Jeff & Sue Beebe
Karen & Alfred Beeken
Debby Beggs
Supriya Behl
Helen Behn
Martha Belanger
Andrea Belen-Sandhorst
Carolyn Belford
Linsey Bellan
Daniel Bellissimo
Paula Bellissimo
Gregory Benckart
Steven Bend
Lisa Bender
Paula Bendzsuk
Tom Benic
Karen Benner
Telisa Bennett
Richard Bennington
Janie Benoit, M.D.
Jill Berardi
Rick Berardi
Johnathan Berardinelli
Wendie & Jeremy Berg
Leah & Dale A. Berkey

Alice Berkey
Melanie J. Berry
Sonja Berry
Jason Bertocchi
Jeanne Bestwick
Stephanie Bestwick
Patti Betka
Eric J. & Larissa Betka
Jennifer Beveridge
Tamara Bey
Lisa Bhadsavle
Mary T. Bialota
Bethany Bible
Joanna Bigos
Natasa Billeci
John Bilyak
Marta Binotto
Taylor Birnbaum
Sherri Birsic
James Birsic
Kathleen H. Bischak
Dana Bissontz
Matt Bittner
Michael Bizub
Kari Bjornard, M.D.
Maggie Black
Travis Black
Donna L. Blackmon
& Timothy W. McGuire, Jr.
Larry & Phyllis Blair
Graeme Blake
Tammie Blake
Sandra Blaser
Brienne Blazosky
Margaret Blivin
Allie Blu
Julie Blystad
Joseph Boben
Mary A. Bober
John Boczar
Lauren Bodart
Deborah Boggs
Susan Bommer
Ann & Richard Bondi, Jr.
Mollie Bongiovi
Bridget Bonilla
Aaron Bonus
Samantha Boris
LuAnn Borowski
Maggie Borrelli
Patricia L. Borushko
William Boske
Carolyn Bourgeois
Maria Teresa Bourlon Rios, M.D.
Melissa Bousquet
Carmen Bowling
Vera Bowman
Mary Bowman
Dean Bowman
Kristin Bowman
Kristie & James Bowman
Amy L. Boyd
Cleo E. Boyd
Amy D. Boyd
Lisa Boyd
Jennifer Brach, Ph.D.
Daniel Bradley
Natalie Brahm
Rhonda & Randall Brand
Joe Brandle

Kayla Brandt
Courtney Bray
Lauren Breslin
Donna Brett
Barbara Brewton
Rachelle Brick
Olivia Brinker
Paola Britos
Jessie Britt
Virginia Brochu-Lafontaine
Dr. Natalya & George Bromall
Joyce Bromberger
Frank Brown
Michelle Brown
Margaret F. & Thomas J. Brown
Tim Brown
Kevin Brown
Sue Brown
Jessica Brown
Charlene Brown
Elizabeth Brown
Robert Brown
Erica Brown
Terry Brozick
Joan E. Brozick
Diana Brucha
Dave Brudy
Gloria C. Brusoski
Chris W. Brussalis
Christina Brussalis
Christine Bryan
Katie Bucci
Jessica Bucci
Kristen Davis Thompson
Laura Buchanan
Ronald Buckanovich, M.D., Ph.D.
John Buckingham, Jr.
Julie-Anna Buckley
Astrid Buckley
Tammy Buckner
James & Lori Buckreis
Sheila Budner
Dianne Buirge
Susan Burd
Joseph & Carol Burda
Walter Burenin
Kristen Burke
Linda B. Burke
Christa Burneff
Karen Burns, M.D.
Jeanne Burns
Lorelei Burns
Jesse Burns
Vernita Burrell
Erin Bussard
Patricia Bustamante
Ashley Buterman
Dawn Butler
Linda M. Butler
Susan Burton
Michele Butter
Daniel Buysse
Regina C. Byerlein
Barbara Byers
Richard M. Cabosky
Kyra Cahill
Hou-Ming Cai
Kim Calandra
Karen & Mike Calandra
Mary Caldwell, RN

Amy E. Callan
Astral Cambuzzi
Jennifer Camerot
Wendy Camlin
Erin Campbell
Bob Campbell
Janet Campbell
Sara Campbell
Jill Campbell
Grace Campbell
Jody Campbell
Sukhkamal B. Campbell, M.D.
Shelby Zarotney Campbella
Nicholas Canderan
Kathy Cannon
Peg Cannon
Sharon Cannon
Norma M. Caquatto
Brian Carbonara
Sue Carey
Neil Carleton
Thomas Carlins
Sheila Carney
Danna Carr
Barbara Carr
Mary Ellen Carroll
Judith A. Carroll
Kalee Carson
Michele Carson
Sandra Cascio
Jay Case
Patrick Casey
David Cashmere
Stacia Casillo
Katie Caspero
Gregory Caspero
Anne Casson
Gabriella Castellano
Valerie Castelli
Bonnie S. Castellon
Peter Caterinicchia
Dr. Janet Catov
Jennifer Cavalancia
Peggy Cavallo
Jordan Cavanaugh
Bahar Ceceli
Mollie Cecere
Jessica Cerchiaro
Therese C. Chadowski
Christine D. Chambers
Ben Chambers
Serena Chan, M.D.
James Chappell
Rita J Charles
Thomas Jones
Nancy Charleston
John & Margaret Charley
Asma Chattha
Josuah Chavez
Juana Chavez
Jian Chen
Christopher Chermansky, M.D.
Bobby Cherry
Barry Chezik
Krista Childress, M.D.
Wendy Chiswick
Joyce Christensen
& Eileen Doucette
Mindy Christianson, M.D.
Gregory Christman, M.D.

Guang Chuang
Dr. Ki Y. Chung
Marie B. Churley
Faith Churley
Greg Churley
Al Churley
Mary E. Ciccone
Sharon Cicmansky
James Ciotti
Linda P Cisar
Stephanie Cizek, M.D.
Jodie Clark
Laura Clark
Gabrielle Clark
Jamie Clark
Pamela T. Clark
Kewanee O. & James W Clark
Crystal Clark, M.D., MPH
Becca Clepper
Wendy Clibbens
Suzanne Cline
Amber Clites
Tyler Cloak
Allison Close, M.D.
Barbara Cobb
Sahara Cochenour
Shanna Cochran
John Cunningham
Patrick Cody
Paul Coebergh
Gerria Coffee
Lan Coffman
Benjamin R. Coffman
Katharine Coffman
Alene & Jason D'Alesio
Diane Cohen
Lisa Cohn
Melinda Colaizzi
Dane Colaizzi
Laura Colditz
Frederick H. & Mary Jane Colen
Katie Collins
Clare Collins & Brian P. Gabriel
John Collins
Michelle Collins
Rebecca Colosimo
Perry Colosimo
Susan Colosimo
Kimberly J. Comer
Sharon S. Compton
Kristine Connell
Jennifer R. Connelly
Helenea Connor
Ellen Consider
Elizabeth Constance, M.D.
Nicole Constantino
Beth Conway
Lisa Conway
Shawna Cooke
Lizzie Cooney
Ryan Cooney
Deborah Cooper
Karen M. Cooper
Amy Cooper
Deborah Copaken
Tammie & Edward Copelin
Brian Corcoran
Colleen Cordova
Dr. Stephen & Christianne Corey

Frank W. Cornell
Marie E. Corns
Helio Costa Ph.D.
Nicole & Daniel Costantino
Linda R. Costello
David & Susan Cottrell
Louis-Philippe Coutu Nadeau
Pam Cox
Tarah Cox
Joyce Cox
Nikki Cox
Valeria Coyer
Kathryn Coyne
The Cozen Family
iNetworks, LLC
Robert Craig
Ruth Craig
Tiffany & Brian Cramer
Melissa & Martin Crimmins
Tiffany Croft
Nancy J. Crouthamel
Jenna Crowley
April Croyle
Sue Croyle
Natalie Crump
Courtney Cummings
Justin Cummins
John Cunningham
Aidan Curran
Cush Cusher
Lisa Cyterski
Gail D. Edwards
Victoria Dacey
Natalie Daddona
Alene & Jason D'Alesio
Alice & Donald Damiano
Shirl & Robert D'Amico
Kathy DAntonio
Miriam & Roberto DaRocha
Debra A. Darrigo
Crystal Daughtry
Katherine Daunov
King David
Rob Davies
Lynn Davis, M.D.
Kathy Davis
Jack Domi Do
Robert Davis
Meghan Davis
Jennifer Davis
Rashonna Davis
Elizabeth Davis
Ashley Davison
Meghan Dawson
Diana Dawson
Ruth Anne Dayton
Tess De Las Alas
Stacy de las Alas
Nicole De Luca
Susan De Santi
Stacy L. Dean
Paula D. & William Paul Deasy
Joe DeCrosta
Lori Dedola
Therese M. Defazio
Aimee M. Defoe
Brian Deihl, M.D.
Dana Delduca-Cindric
Janet R. Dell

David Dellinger
Dreama Lee & James N. Delmar
Steven DelVecchio
Marie L. Demchak
Frank & Rose DeMino
Jill Demirci
Nancy L. & Nick Denardo
Gary E. Dennis
Julie Dennis
Ron Denunzio
Kristine Depolo
Jo Lynn & Patrick C. Derdenger
The DeRenzo Family
Lynn Dermott
John Desantis
James F. Desch
Stephanie M. DeStefano
Frank Destefano
Janice Devine
Ankita Dewan
Barbara & Mark DeWitt
Joy Dezelle, RN
Richard & Karen Diamondstone
Christina Dickerson
Kristina Diduch
Camille DiGiovanni
Elaine Diller
Amanda Dilling
Nicole Dimanov
Andrew Dinardo
Kai Ding
Renee Dinuzzo
Rebecca Dipatri
Ashley E. Disantis
Sheryl Ditulo
Anthony DiToto
Nikel Dixon
Hazel Doane
Deanna Dobbins
Chris Dobbs
Lorraine H. Doerr
William Dolcich
Dr. Michelle & Frank Domeisen
Margaret Doms
Lissamarie Donjuan
Jim Donnelly
Brennan Donnelly
Maureen A. Donohue
Dr. Heidi Donovan
Katlyn Doolin
Terri Dorsch
Sam Dorsey
Andy Dougherty
Karen Douglas
Carol A. Dowling
Sylvie Downey
RoseAnn & Michael Downey
Debbie Drury
Libby Dub
Nancy Dubis
Katie Dudas
Dannie Dudas
Edward & Jane Dudek
Pearl Carter
Katya Duft
Christina Dugan
Madison Dugina
Loren Dukate
Alejandra Dumenigo



FRIENDS OF MAGEE (cont.) (UP TO \$499)

Michele Dumpman
Mary Ann Dunkin
Christopher & Barbara Dunn
Greg & Amanda Dunn
Jacquelyn Duplessis
Louis Durigon
Stephanie Dutton
Randall Dykstra
Georgine Early
Christopher Eash
Stacy Eber
Katie R. Eddens
Gail D. Edwards
Dr. Robert P.
& Antoinette Edwards
Jessica Egan
Ashuvinee Elangovan
Holly Elden
Mohamed Elfayoumi
Nurit Elis
Jennifer Ellermeyer
Jennifer Elliott
Leanne Elizabeth Elliott
Jennifer Elvikis
Jarret Engstrom
Allison Engstrom
Sean Enright
Lori Erdlen
Laura Erickson
Vim Esporas
Pamela & Kim Estep
Thomas Evancho
Matt Evans
Millie Evans
Kimberly M. Evans
Ashlee Evans
Susanna Evans
Caitlin Evans
Marcee Evans
Manuela Everly
Heather Evers
Lauren Fagan
Felicia Fahlsing
Fern E. Faigen
Douglas Fair, M.D.
Kim Falk
Minda Fall
Tim & Laurie Faller
Tina Famiglietti
McDermott Family
Lewellyn Family
Susan Fancsali
Samuel Farkas
Steve Farkas
Marlene A. Farley
Nicola Farnell
Jennifer Favorite
James Fawcett
Christy Fawcett
Stacey Federoff
John Fedorko
Anthony Feiger
Karen W. Feinstein, Ph.D.
Sarah Felderhoff
Stefanie Fenrick
Joseph & Margaret J. Ference
Joyce A. & Patrick T. Ferko
Nicole Ferraco

Francesca Ferrante
Wayne Fielder
Karen Figenshau
Kathryn Fike
Courtney Finlayson, M.D.
Kelly & Tom Finley
Anthony Finoli
Erin Davis Fiore
Pailine Fiore Haines
Judy Fischer
Lisa Fischetti
Jessica Fisher
Laura Fisher
Josie Fisher
Laura Fisher
Mary K. Fisher
Kristina Fitz
Jocelyn Fitzgerald, M.D.
Patricia Fitzpatrick
Mary Fitzsimmons
Angelo Fiumara
Stacy Flanagan
Lacey Fleming
Glynnis Flores
Deborah Flowers
Rebecca Flyckt, M.D.
Lia A. & Jonathan P. Fodi
Carol L. & John C. Fogle
Ann Fogliani
Sarah Folan-Grab
Donna M. Folino
Robyn Folsom
Susan Folson, M.D.
Heide Ford
Philomena Ford
Ralph Ford
Michael & Mary Ford
Andrea Forney
Peggy Forquer
Kymberly C. Forsyth, M.D.
Jane Fortner
Jenna Fortunato
Amy Foster
Jared Foster
Melissa Fountain
Erin Foust
Christy Fowler
Jimmy Fox
Elizabeth Frame
Whitney Francois
Mark Franks
Tamara Frazier
Natasha Frederick, M.D.
Megan Freeman
Robert Freis
Olivia Frias
Kayla Frye
Lori Frye
Amy Fuller
Brenda Furiga
Linda Fusco
Pat Fustich
Heather G
Lynne Gaber
Joseph (Scott) Gabrielsen, M.D.
Terri Galante
Allison Galkowski
Georgann Gall
Cristina Galla
Marlee & Greg Gallagher

Merle Gallaher
Diana L. & Nicholas F. Gallick
Robin E. Gandley
Dr. Marie A. Ganott
Robin Gans
Bingsi Gao
Tim Gapsky
Neva Garcia
Kristin Gard
Sandra K. Gardner
Patrick Garrett
Alison Garrett, M.D.
Mary Gasiorowski
Tim Gasper
Sue Gast
Hope Gast
Sylvia Gaudelli
Tim Gaus
Lindsay Gaworski
Dan Gbur
Tricia Gearhart Ph.D.
Arnold & Adrien Gefsky
Gary & Mary Lou Gegick
Jane I. & Barry M. Gehringer
Mark Geller
Jessica Geminiani
Kim George
Lynn George
Kaitlin George
Lukas Georgiadis
Lukas P. Georgiadis
Karen J. Geragi
Sue Gerard
Abigail Gerberick
Ruth Gerger
Elaine Geris
Brian Gesalman
Nina Gettemy
Linda Getter
Juliet Gettings
Margaret Ghannam
Sibdas Ghosh
Barbara Giammatteo
Pamela Gianni
Margaret A. & Allen E. Gibboney
Elaine Gibson
Zippy Gibson-Davis
Tammy Gido
Cindy Gilfert
Kathleen Gill
Maureen Faherty Gill
Hillary Gillespie
Leslie L. Gingo
Samara Ginzburg
Duane Girard
Jesse Gitaka
Mr. Lauren E. Giugale, M.D.
Anthony J. Giunipero
Frank Giunipero
Josie Glace
Jeanne Gladilina
Dr. Laurence & Ingrid Glasco
Karen Glass
Julia S. Gleason
Sophia Gledhill
Sharon Glover-Houvener
Shannon Gnarra
Hope Gochis
Susan & Richard Godfrey
Jeanette Godley

Kaitlyn Goerl
Zandra L. Goldberg
Richard E. Goldinger
Dolores Goldman
Kara Goldman
Betty Gomez
Diana Goncalves
Gina Goodman
Foram Gopalji
Vikram Gorantla
Matthew Gordley
Dr. Kimberly Gordon Tucker
& Dr. James Tucker
Suzanne Gore
Lauren & Michael Gorman
Maureen Gormlely
Dale Gornall
Michael Gosnik
Robert Gould
Josh Gould
Natalie Gould
Natalie Gould
Darleen Gourieux
Dr. Shannon Grabosch, M.D.
Amy Gradnik
Leigh Grady
Julia Graeper
John Graf
James Graham
Georgia Graham
Richard Graper
Martha W. & Richard J. Grattan
Deborah Graustein
Courtney Gravett
Faith Gravitt
Alicia Gray
Claudia Gray
Casey Grealish
Rebecca Green
Essence Green
Nichol Greene
Benjamin Greenfeld
Danny Greenfield
Stacey Gregg
Maureen & Bob Grenke
Deborah Grice Conway, Ph.D.
Daniel Griffith
Rachelle & Stephen Grobstein
Lindsay Gromek
Marielle Gross, M.D.
Rachel Grove Rohrbaugh
Betsy & Ronald Grzymkowski
Rosemary Guerrini
Laura S. Guido
Marina O. Guirguis, M.D.
Lisa Gundel
Kathryn Guo
Amy Gustafson
Barbara Gutowski
Jeanine M. Guzzardi
Lydia Habenicht
Janice & Chuck Hackett
Kathrin Haderer
Beth Hafer
Bill Hagan
Hopper Hagan
Eric Hagan
Jessica Hagan
Ms. Sandra Hagan
Jamie Hahm
Dr. Christiane Hakim

Marsha L. Haley
Jennifer Hall
Miriam Halperin-Maya
Christine Haney
Jeris Haney
Jessica Hannick, M.D.
Teresa Hanselman
Denise Hantak
Zac Haras
Edward W. & Nancy Lee Hardy
Cassandra & Chad Haring
Megan E. Harmon
Jeffrey Harrington
Lindsay Harrington
Nicolas Harrington
Jason Harrington
John A. Harris, M.D.
William Harris
Beverly Harris
Larry Harris
Andrew Harrison
Amy Harshell
Ashley Hart
Ronald G. Hartman
& Leslie A. Golomb
Gregory & Kristy Hartman
Amy Hartman
Roxann & Frank Hartmann
Carrie Hartnett
Rob Harwood
Brant Hasler
Christine Hatheway
Patricia Haughton
Shannon Hause
Ashley Haverlack
Laura Havrilla
Teresa Hawke
Peter Hawkins
Gloria Hawrylak
Peggy Hayden
Karen HomieWo
Jennifer Hayward
Elizabeth W. Hazel
Sam & Dawn Hazo
Carol E. Healey
Shane Healey
Rachel Heaney
Kevin Heher
Beverly & William Heimberger
Rachael Heisler
Kathy Heisler
Rosemary Guerrini
Alicia Hemphill
Bayli Hendrix
Christine Henney
Paul Hennigan
Barbara C. Henninger
Irvelt Henriquez
Janice & Henry
James Hershey II
David Herbert
Kellee Herbster
Julie Herndon
Jack & Pam Hernon
Dennis Herrell
Beth & Bernie Herrmann
Dale Hershey
Judith Herstine
Kathleen Hertenstein

INDIVIDUAL DONORS

FRIENDS OF MAGEE (cont.) (UP TO \$499)

Lisa Hess
Margaret A. Hettler
Colleen Hickey
Christine Highsmith
Beth Hildebrand
Miriam Hill
Leah Hillgrove
Tennille Hilyard
Allison Himes
Edgar C. & Dawn L. Himler
April Hincy
Kay Hinds
Ayana Hines
Kathy Hinkle
Jill Hirsch
Dr. Betty J. Hirschfield-Louik
& Howard Louik
Grace Hobby
Gabby Homi Fo
Holly Hoefgen, M.D.
Sonia Hoey
Josiah Hoffman
Ellen Hoffmeister
Kramer Holle
Judy Homer
Aksana & Mark Homnick
Marilyn & Charles Honigsberg
Dr. Jagmohan Hooda
Dipender Hooda
Raeann Horgas
Teresa E. Hornbake
Connie Hornbeck
Paula Horne
Dona & Thomas Hotopp
Victoria Howell
Heather & Chris Hoyt
Tom Hritz
Haipeng Huang, Ph.D.
Hseuho Huang
& Leau Chen Huang
Dr. Carl & Kathy Hubel
Amanda Huber
Julia Hubert
Debbie Hudak
Sabrina Hudson
Lyndall Huggler
Kylie Hughes
Stephanie E. Hughes
Barbara Hughes
Allison Hullhorst
Kathy Humphrey
Glenn Hundertmark
Shawnika C. Hunt
Marian Huq
Danny Hussmann
Katie Hutchison
Erin Huttenhower
Victoria Huynh
Matt Iannazzo
Erick Iezzi
Mr. Donald D. Iezzi
Jacky Ifft
Nolan Ifft
Kenneth & Susan Ilgenfritz
Nicole Illouz
Annie P. Im
Roseann T. Imerito
Danielle Incorvati
Marilyn Infante
Sarah Ingram
Susan Iovino
Dale S. & Shawn S. Irwin
Alla Ishmukhametova
Leila Ismael
Chelsea Jackson
Timothy Jacob
Steven Jacobi
Karen Jakubowski
Megan Jamison
Robert P. & Celeste E. Janosko
Thomas Jansson
Jayapriya Jayakumaran, M.D.
Carolina Jayaram
Yasmin Jayasinghe
Janet M. Jenkins
Patricia Jicha
Sarah Jimenez
Michele Johnson
Christina Johnson
Phillip Johnson
Maggie Johnson
Viola Johnson
Shelly Johnston
Elyse R. Johnston
Devin Jones
Marisa Jones
Dawndra Jones
Emily Jones
Nicole Jones
Doug Jones
Lauren Jones
Jill Jones
Caitlyn M. Jones
Larisa Jordan, M.D.
Laurita Jordan
Sophie A. Josepfs
James J. & Kim Joy
Shannon Joy
Nicole Juberu
Nina Juricich
Cheryl Kaiser
George Kalantzis
Anne Kalisek
Lori Kallams
Sara Kallams
The Kallos & Abeal Families
Markie Kaminski
Jim Kane
Justin Kanter
Tania Kappas
Jacqueline Kapres
Constantino Kardassis
Marianne Karlovich
Kelly Kasing
Devona Kasonye
Madison Kasperek
Katelin Kastner
Mindy Kaufman
Karen Kaufman
Maria Kautter
Jay Keating
Matthew Keehn
Jodi Keenan
Karlie Kehoe
Nancy & Louis Keller
Jean G. Kelley

Leah M. Kelly
Rose Marie Kelly
Nicole Kelly
Marilyn Infante
Sean P. & Karen S. Kelly
Jessica Kelly
Hadley Kelly
Laura Kelly
Cynthia Kelly
Ann & Fred Kenderson
Tara Kennedy
Constance Kennedy
Karen Kennedy
Patricia Kenney
Thomas J. & Ann J. Keogh
Kerri Keohane
Barbara & Robert Kepple
Ann B. Keppler
Eric Keppler
Ruth Keri
Shaun Kerrigan
Diane Kerrigan
Eric Kessler
Janet L. Kettering
Tyler Ketterl, M.D.
Marian & John Keyes
Reem Khaldi
Natasha Khouri
Sheryl Killen
Hayeon Kim
Amy Kimble
Sarah Kimutis
Vincent & Vicki Kincade
Thomas King
Sharon Kinney
Jacqueline Kinney
Donna Kinsey
Suzanne Kinsky
Donna J. Kirby
Jessica Kirk
Susan Kirk
Joanna Kirsch
Susan Kirton
Margaret Klein
Nick Klein
Wallace Klein
Kayla Klett
Lisa Klimpel
John Klingler
James Klosky, Ph.D.
Tracey Knabe
Beth Knapick
Stacey Knavish
Harry A. Knecht
Jo Knightley
Liam Knightley
Laura Kniss
Kaitlyn Knopsnider
Bernie Kobosky
Benjamin Koch
Mya Koch
Jan Koch
Swamy Kocherlakota
BethAnne Lankey
Kelley Koehler
Nicholl Koehler
Sherry Koehler
Ken Koehler
Pam Koehler
Scott Koehler
Joyce A. Koehler
Nicholl Lynn Koehler
Donna Koenig
Jocelyn Koessler
Tomoe Koizumi
Rebecca Kolb
Debra Kolb
Diane Kolling
Katherine Koniares, M.D.
Barbara A. Kooman
Chris Koontz
Lisa Koritsky
Lacey Kovacic
Edward & Judith Kowalski
Joanne G. Kowiatek
Fran Koy
Ann B. Keppler
Jason Krall
Kimberly A. Kranz
Arlene Kray
Melissa Krebs
Rich Kreider
Madeline Kreider
Joanne S. Kreider
Melissa Kressley
Christine Kretz
Sandra Kretz
Ms. Kimberly Kreuzer
Karen M. & Donald B. Kriley
Jaime Kriner
Linda W. & Michael K. Kroeger
Leah Kroon
Tim Krueger
Lance Kruike
Nicole Krznar
Michelle Kuczykowski
Donna Kudasik
Gabriella Kuhlman
Gary & Dixie Kulbieda
John Kulka
Kathleen A. Kulka
Susan Kirton
Ratiya Kunjara Na Ayudhya
Andrew Kuntz
Elaine Kurtanich
Adrienne D. Kurtanich
Joseph Kurtanich
Timothy Kurzweg
Laura Kutek
Michael & Jaime Kuzycy
Christine L
Valerie Labella
Janie Lacey
Jodi Laderer
Wendy Laird
Chaim Landau
Sharon Landau
Marie & Glenn Landis
Doug Lane
Brooke & Ian Lang
Kenneth Langer
Mary Langevin
BethAnne Lankey
Marilyn M. Lanz
Jennifer Lardo
Monica Laronda, Ph.D.
Gail Latimer
Danielle Latini
Lindsay Latkovic

Donna Latsko
Margaret A. Lattanzio
Ned Laubacher
Cheryl I. Lauer
Laura L. & Joseph L. Laurain
Jeff Laurer
Debbie Laurie
Emily Lausch
Megan Lavery
James Law
Mary Law
Stephanie Lawrence
Barbara L. Lawrence
Kathleen J. Layo
Samantha Layo
Sherri Lazear
Elisabeth Leach
Richard Leach, M.D.
Anica Lease
Antonia Leavitt
Daniel & Margherita Lebish
Youngjae Lee
Young Ji Lee
Nadine C. & Walter E. Lee
Eung-Mi Lee, M.D.
Jonathan Leebow
Christopher & Mary Beth Leech
Mike Leedecke
Nicola Lee-Oesterreich
Carol Lee-Roark
Erica Lehman
Mark Lehman
Jovana Lekovich
Amanda Lemon
Katherine Lenhart
Jill Leonard
Margaret & Barry Leonard
Michael Leonard
Lauren Leonarduzzi
Whitney Lerch
Nora Lersch
George Lesiak
Andrew Lesniakowski
Jamie L. Lesnock, M.D.
Paul W. Leu
Dr. Heather Levin & Joshua Polsky
Gloria & Frank Lewandroski
Kiara Lewis
Marcie Lewis
Rachel Lilley
Michael Limbacher
Carol Lin, M.D.
Stephen Linder
Jessica Lindsay
Malvina Y. Linkov
Virginia Linn
Kelly Linn, R.N.
Jessica Liokareas
Ronda L. Lion
Michael Lipman
Jennifer & Timothy Lipp
Lindsay Litterini
Sasanka Liyanage
Lisa Lizanich
Jessica Lizarazo
Stephanie Lizik
Jolly Lloyd
Barbara Lockart
FullCharles

Kathy Logan
Thomas Logan
Nancy Lohr
Kayla Lomb
Courtney Long
Dan Long
Maureen Long
Mickie Long
Claire Long
Kristin Loomis
Tina Lopez
Lisa Loren
Deana Lorenzo
Jenna & Frankie Los DiFrancesco
Elise Loughran
Janet Love
Shakeria love
Judy M. Lowstetter
Angie Lucas
Sharon Lucci
James Ludemann
June Lueck
Robert & Deborah Luffy
Noah Lundberg
Scott Lundy, M.D.
Alexandra Lutz
Laura Lydic
Karen D. Lyle, P.A.
Judith Lyle
Hannah Lyons
Michele M. Lyons
Emma Mack
Anne Madison
Patricia Maedinger
Miwako M. Magee
Haider Mahdi, M.D.
Meredith Maher
Judith Maholtz
Shea Mahon
Lisa Mahoney
Rachel Main
Sheryl Main
Jessica Main
Adrienne J. Maist
Matt Makowski
Danielle M. Malchano
Marianne Malcuit
Joy Malena
Judith Ann Malenka
Shikha Malhotra
Tam & Thyra Malloy
Jewel Malone
Mary Frances Malone
Donald R. Maloney
Joyce Maloney
Jen Maloney
Deborah L. Malush
Eileen Manalo
Renee Mandell
Mark Mangel
Judy A. Manios
Alaina Marburger
Rosemary Marchesani
Pamela Marchione
Sarah Mardon
Sarah Mardorf
Robert J. Marefka
& Roberta T. Gallick
Michelle Margeson

Dawn Marie Thomas
Rebecca Markovitz
Nancy L. Marquez
Kevin Marraccini
Sandra Marsh
Susan J. & Richard C. Marshall
Fred Marshall
Elisa Marshall
Lawrence Martin
Nathaniel Joseph Martin
Kelly Martin
Nathan Martin
Timothy Martin
David Martin
Amy Martinez
Nayeli Adeline Martínez-Ibarra
Lauren Martino
Gabby Martino
Kim Masarik
Gina Momi Ro
Nicholas R. Masterson
Justin Matase
Mark Matera
Colleen Mathews
Laurie Mathie
Ariana Matoney
Matt Lewis
Meredith B. Matthews
Jennifer L. Matthews
Donna Mattoon
Evelyn & Paul M. Matvey
Lillian Mau
Margaret Ann Maxwell
Tim Mayles
Ellen Mazo
Diane Mazza
John & Diane Mazza
Nikki Mazza-Fredley
Evie McAdoo
Dr. Priscilla F. McAuliffe
Deborah McBride
Irene L. Mcbride
Kristine Mccabe
Michele McCaffrey
Kerri McCall
Georgiana Mccary
Georgette Mccary
Patricia J. Mccloud
Steven McClung
Kambra B. McConnel
Bill & Kiki McConnel
Mathew McConnell
Kevin Mcconnell
Katherine A. McConnell
George McCullen
Jen Maloney
Deborah J. Mccune
Gina McDaniel
Kristy & Michael McElhinny
Howard Mcfadden
Anne McFarland
Jennifer L. MCGarrity
Olivia McGinn
Janice L. McGivern
Stacy McGonigal
Jenna McGreevy
Margaret McHenry
Rose Marie McHugh
Maureen McKay

Gracie Mckee
Nathan McKenna
Patricia H. McKenna
Laurie McKenzie
Marian McKinley
Karen McKnight
Patti McLain
Mary McLaughlin
Maribeth & Mark McLaughlin
Michael M. McLaughlin
Amy McLaughlin
Bonnie & Bob McLaughlin
Janet L. McLaughlin
Dr. Joel Mcmanus
James McNabb
Brian McNally
Karen Mcnamara
Leslie Mcnaughtan
Jennifer McPaul
Samantha Mcpheter
Lawrence McShea
Donna Mcshea
Joan McSorley
Thelma J. Meacci
Lillian Meacham, M.D.
Meade Kelly
Nicole Meck
Ya Jagoff Media
Amy E. Medvec
Mazen Megahed
Dr. Christina Megli, M.D.
Nikita Mehta
Anna Kate Melani
Rick Melendez
Beth Melendez
Alexandra Melendez
Alexandra Melnyk
Peggy Melvin
Allison Mend
John Mendenhall Jr
Diana Mendoza-Cervantes
Mara Menk
Mark Meredith
Dan Merica
Laura Merriman
Frances L. Merryman
Jenny Mesidor
Dorothy Metas
Penny Metchev
Kathryn Metz
Kelly Metzgar
Lauren Meyers
Jessica Meyers
John Michaud
Gerald Michniak
Jean Miewald
Mark Mikulan
Debbie Miladinovich
Trina Miles
Christa Miles
Marlene V. Milik
Caitlin Miller
Gina Miller
Keville Miller
Etta L. Miller
Sandy Miller
Sandra A. Miller
Lori Miller
Ken Miller

FRIENDS OF MAGEE (cont.)

INDIVIDUAL DONORS

FRIENDS OF MAGEE (cont.) (UP TO \$499)

Thomas Miller
 Patricia A. & Alan S. Miller
 Kelly Miller
 Rachel Miller, M.D.
 Michelle Miller
 Angie Berna Milliren
 Cynthia Mills
 Susan Mills
 Rita Mincin
 Tamra E. Minnier
 Elizabeth S. Minnotte
 Debra Minsinger
 Jacob Minsinger
 Kassie Mirabal
 Evelyn Mirabella
 Cathy Miseta
 Tana Mitchell
 Emani Mitchell
 Robert Mizner
 Shan Modi
 Katelyn Modolo
 Francesmary Modugno
 Megan Mohring
 Vijayamani Mokkaapati
 Camille Molina
 Moira Molloy
 Elise Monceau
 Nancy Monday Yates
 Estefanía Montenegro
 Olivia Moody
 Chuck Moore
 Pamela L. Moore
 Kelly Moran
 Molly Moravek
 Jamie Morgan
 Ed & Sandi Morgan
 Tammy A. Morgart
 Danielle Morley
 Cathy A. & John C. Moroco
 Kathleen Morrison
 Josefina & Joseph T. Morrissey
 Dianne E. Mosby
 Lorelli J. Moser
 Dr. James Moses
 Theresa & Richard Mosko
 Ashley Motta
 Lindsay Motta
 Jean-Francois Mouillet, M.D.
 Abby Mountain
 Eberhard Mueller-Heubach, M.D.
 Diane & Al Muir
 Michael Muir
 Susan Mularski
 Andrew Mulkerin
 Marilyn Mulvihill
 Jewel Mundt
 Brian Murphree
 Lisa Murphree
 Nina & Justin Murphy
 Kelly Murphy
 Elaine Murphy
 Shatara Murphy
 Antonette Murphy
 Sonja Murphy
 Jami Murray
 Lana Murray
 Joan Murray

Christine & Thomas Murray
 Thomas Murray
 Diane Muscia
 Gal Musette
 Music Carolyn
 Elizabeth Mussari
 Martha L. Mychkovsky
 Ruth Myer
 Paige Myers
 Cheryl L. Myers
 Matthew Myerson
 Kathleen & David Nackoul
 Ali Nagle
 Gail E. Nagy
 Leena Nahata, M.D.
 Bethany H. Narajka
 Amanda Narcisi
 Melissa Naret
 Nafis Narsinghani
 Azadeh Nasrazadani
 Edith B. & Jacob Naveh
 Nicholas Nazak
 Madelyn R Nazak
 Maggie Nazak
 Sheila Neely
 Brittney Neely
 Emily Neese
 Jeremy Nelson
 Quincy Nelson
 George Nelson
 Sharon & Richard Nelson
 Carolyn A. Nelson
 Ann Nemec
 Brea Neri
 Anna Neri
 Sarah Nesheim
 Judith B. Neville
 Cindy & Rodger Newman
 Ms. Frances Newman
 Mandy Newport
 Gail Newton
 Caitlin Newton
 Tess Newton
 Kim Nguyen
 Peter Roberts
 Christina V. Nicassio
 Julie Nichols
 Robert & Sandra Niederberger
 Rachel Niemiec
 Cara Nikolajski
 Anita Nischal
 Kyle Nornhold
 Sue Norton
 Martha & James E. Norton
 Rebecca Novak
 Geri & Nick Novotni
 Anita Nowak
 Randolph Nunez
 Lady Nwadike
 Donald T. Nyalka
 Jenna Nypaver
 Debbie Nypaver
 Elise Oberman
 Terri O'Brien
 Martha O'Brien
 Chris O'Brien
 Lauren Obringer
 Jill Ochs
 Janet Oconnor

Patrick Oconnor
 Christine & Bryan O'Connor
 John Odell
 Steffi Oesterreich, Ph.D.
 Gerald Ogrosky
 Margaret M. Ogurchak
 Bunny O'Hannon
 James Ohrn
 Dawn Okwu
 Sandra M. Olenick
 Sarah Olexsak
 Henry Oleyniczak
 Michelle Oliver
 Charlotte L. & John D. Oliver
 Maureen Oliveri
 Lundquist Olof
 Elizabeth O'Mahoney
 Mark O'Mahoney
 Linda J. & Robert F. Oneill
 Craig Orapello
 Edith B. & Jacob Orlosky
 Evangeline Orlosky
 Nikki Orolin
 Susan Orr
 Nathan Ortinberg
 Larry Ortinberg
 Andrew Ortiz
 Adrienne Ortman
 William Osche
 Priscilla Ostrowski
 George F. Oswald
 Judith O'Toole
 Cynthia & Lawrence O'Toole
 Tom O'Toole
 Karen Ott
 Donna Blinn & David Ottoviani
 Ola Owoputi
 Linda Ozar
 Matthew Paat
 Barbara A. Pacifico
 Brandon & Mandy Packard
 Jennifer Packard
 Maura Paczan
 Marilee Painter
 Vasiliki Paliouras
 Jill Palmer
 Maria Paluselli
 Elvira Pampena
 Lynn Panciera-Fraser
 Thomas Panigall
 Sarah Pannella
 Tamara M. Panucci
 Amanda Papay
 Judith A. Pappalard
 Christine Paracca
 Janet L. Paris
 Stephen L. Parker
 Karen & Richard J. Parker
 Katherine L. Parker
 Joann Parkus
 Diana Parris
 James Parsons
 Sobia Parveen
 Robert & Pamela Pasko
 Meghan Pasquarelli
 David Passmore
 Rhiannon Passmore
 Maureen Passmore
 Karen Pastor

Neha Patel
 Vrunda Patel
 Linda Paterniti
 John P. Paterra
 Robert Patterson
 Cyndy Patton
 Shea Paukovics
 Melissa Pavlack
 Elizabeth A. Pavliakovich
 Jason Pawlowski
 Michelle Pawlowski
 Adriana Pearson
 Victoria Pecic
 Carol Pedicini
 Karen Peiritsch
 Mark & Elizabeth Pelusi
 Amy Peluso
 Page Pennell
 Marcie Pennington
 Bonnie J. Perella
 Katie Pergantis
 Jolene Pergolis
 Heather Perman
 Frank Perman
 Mark Perron
 Nicole Perry
 Zachary Persichetti
 Andrew Peters
 David Peters
 Elizabeth Peterson
 JoJo Petkovich
 Dorothy Petrancosta
 Tracy Petras
 Jill Petrillo
 Karen Ott
 Virginia Petrosky
 Mary Petrucci
 Melanie & John Petrucci
 Vivian Petticord
 Zachary Pettis
 Gwen Pettis
 Rachel Pettis
 Patrice Pettis
 Leigh Pettis
 Lori Pevarnik
 Betty Ann & Joseph P. Pezze
 Joanne M. & Ralph C. Phelleps
 Jacob Phillips
 Natalie Phillips
 Ann Phillips
 Mary Phillips
 Casey Phillips
 Timothy Phillips
 Margaret Phillis-Wasco
 Cara P. Phoebe
 William & Cheryl Picard
 Bernard Picchi
 Ezio C. Piccioni
 Kathy Pierce
 Alana Pietragallo
 Maureen Pilkington
 Celia Pilkington
 Thomas Pilkington
 Rob Pillar
 Ms. Breanne Pinaro
 Samuel Pinckney
 Samuel Pinckney
 Erin Pinckney
 Stephanie Pipero
 Molly Pirl

Nick Pirl
 Kelly Pirl
 Annie Pirl
 Gayle & Lawrence Piroli
 Julia & James Pitcavage
 Charon Pitre
 Jenny & David Pittman
 Rachel Pitzer
 Lydia Jane Pizarroalvarez
 Kenneth R. Pizzica
 Marie Planell
 Brent Plummer
 Kimberly Polakoski
 Michael Polen
 Christine Polen
 Michael Polen
 Leslie & Matt Poljak
 Myrna Pollock & Charles N. Strotz
 Dorothy Pollon
 Marisa Pompeo
 Kristen Pope
 David Popovec
 Katy Porter
 Diane Posey
 Ellen Poslusny
 Michelle Post
 Julie Potash

Channing Powell
 Melissa Powell
 Joseph Powell
 Kimberly F. Power
 Paula Powers
 Bill Powers
 Thomas G. Prager
 Olivia Prebus
 Julian Premus
 Kristin Price
 Tom Price
 Angel Price
 Anne-Marie Priebe
 Megan Pruet
 Paul Pryblo
 Linda J. Puhalla
 Jody Pujol
 Kathy Purcell
 Heather Purpura
 Cristina C. Quesada Candela, Ph.D.
 Karissa Quinlan
 Beth Quinn
 Kerstin Quinten
 Katelyn Quirk
 Jeanne U. Rabel
 Micah Rabin
 Michael Rachlin
 Mitch RomiElo
 Donna S. Radock
 Celia Radock
 Bill & Eileen Radolec



INDIVIDUAL DONORS

FRIENDS OF MAGEE (cont.) (UP TO \$499)

Michelle Rager
Sridhar Radhavendra Roa
Lauren Rahuba
Deborah L. Raible
Heather Raithel
Sheila Ramgopal, M.D.
Monica Ramos
Kevin Ramsey
Emma Rando
Debbie Rankin
Lori Ranney
Joni L. Rapneth
Jill Rapps
Robert Rapsey
Rachel Rasmussen
Deena M. Ratner
Lorraine Ray
Daniel Reategui
Karen Redinger
Joanne Redondo
Nathan Reed & Jarah Heeter
David J. & Carol A. Reed
Brielle Reed
Lillian Reeher
Moraine Regatta
Jenna Rehmer
Jessie Reilly
Crystal Reilly
Joyce Reinecke
Rachel Reiner
Earl Reinheimer
Megan Remaley
Karen Rembold
Matt Rembold
Judith A. Remo
Colleen Rhoads
Mara L. Ricco
Erika Rich
Cheryl Richards
Kim Richards
Lauren & John Richmond
Jaime Riddle
Sharon Riddler
Lori & Barry Rideout
Cheryl Riley
Maria Rios
Candice Ritchey
Constance Ritter
MegaLou Rivera
Gina Rizzo
Lisa A. Rizzo
Samantha K. Roa
Kimberly S.
& Richard L. Roadarmel
Katie Robbins
Gail Robbins
Mary C. Roberge
Michelle Robertson
Rochelle Robinson
Michael E. Rock
Christine Rockett
Sarah Rodgers
Virginia Rodgers
Ben Rodgers
Bernadette J. Rogan
Susan Rogers
Dara Rohrbach

Maria Rokicki
Denise Rokitka
Laura L. Roman
Teresa Rosato
Rachael D. Rosen
Michele Rosenbaum
Andrew Rosepiler
Jenny Ross
John Rossi
Paige, Matt, & Abbie Rossi
Bonita Rossi
Ryan Rossi
Caitlan Rossi
Rita Rossi
Ellen L. Roth
Seth Rotz, M.D.
Peggy Routzahn
Gail, Richard & Families
Karlye Rowles
John Rozycki
Alexis Ruberto
Ms. Samantha Rubin
James Ruck
Jamie Rucker
Kawana Rucker
Ronald Runstein
David Russell
Melissa Russell
Jeff Russell
Kim Russo
Kimberly & Eric Ruud
Kevin Ryan
Laurie Sabol
Annie Sadowski
Dr. Elizabeth R. Sagan
Meriah Sage
Sairam Sairam
Diane L. Sajewski
Lisa & Matthew Salamone
Shirley Salvatori
Gina Salvatori
Vanessa Salvucci
Rachael Samuels
William & Shelby Sanders
Taryn Sandheinrich
Ms. Donna Sanft
Anthony Sangiacomo
Christine M. Santone
Amanda Saraf, D.O.
Jean Sassano
Jessica Sattler
Michiko Sawano
Ross Scalise
Gilda Machin-Scarpaci
& Joseph L. Scarpaci Jr.
Janet Schaefer
Gerald Schatten, Ph.D.
& Irene Fonseca, Ph.D.
Ellen Schauerman
Conner Schell
Regina R. Schindler
Kristen Schmidt
Edward Schmiech
Lisa Schmitt
Molly Schneider
Rebecca Schneider
Kelley L. Schnur
Mary Schreyer
Edward Schultz

Shannon Schultz
Marco Schumann
Laura L. Roman
Robert P. Schwab
Rebecca Schwartz
Linda Schwemm
Megan Schwemm
Kurt Schwemm
Susan J. & John Sciarretti
Jim Sciortino
Stephanie Scoletti
Christine Scott
David Scott
Donte Scott
Katherine L. Scruggs
Ann Scutella
Peggy Seagle
Rebecca Seal
Ron Sedney
Carol D. Sedora
Lindsay Seidel
Rosemary Semler
Diana & Pushpendra Senan
William J Siwicki
Lisa Sendek
Edward Sendek
Sharon L. Senge
Valerie Senko
Kristi Senko
Pedro Serbnste
Marjorie Seskey
Debra Sevcik
Jennifer & John Shaffer
Nirav Shah
Osama Shiraz Shah
Jennifer Shanahan
Christopher Shannon
Eleanor S. Sharp
Jennifer Shaver
Catherine Shea & Tony Gross
Elaine Gibson
Vanessa Salvucci
Wilma Sheesley
Brittany A. Sheets
Mary Beth Sheldon
Trevor Shelley
Yuliya Sheremet
Patricia A. Shetler
& Samuel A. Duerr III
Marcia Shew
Jill Shick
Kathleen & Bob Shields
Katah Shields
Kaori Shinya
Caroline Shipman
Suzanne Shirey
Judith N. Shisler
Ksenya Shliakhtsitsava, M.D.
Sarah Shodi
Jennifer Short
Katie Shroyer
Amy Shultz
Libby Shumaker
Laurie Shupack
Amanda Shupe
Vladimir Shvartz
Peggy Sibenac
Sidorovich Family
Aaron Siegel

Eileen P. & John Sieger
Sheri Siegfried
Mary Sienkiewicz
Marta Sifia
Dale Sigman
Jessica Silay Petrunak
Steven & Evelyn Silberman
Susan Silbernagel
Debra M. Silinski
Jim Silinski
Janet Sill
Cynthia Sillhart
Jody Sima
Calvin Simerly
Evelyn Simon
Kelly Simpronio
Trevor Simpson
Shanna Sipe
Tracy Sipprelle
Camelia Sirbu
Stephanie Sirianni
Delval Sis
Mary Lois Sisson
Suneeta Senapati
Douglas & Tina Skalka
The Skeels
Bernadette M. Skoczylas
John Skoko
Julia Skrinjar
Natalia Skurman
Daniel Slagle
Michael Slenska
Melissa Slepiski
Kelly Slipak
Katrina Slivkoff
Mary Lou Sloan
Stephen Smagula
Stephanie Smarra
Tammy Somiteo
Catherine D. Smerdel
Amy Smiley
Megan L. Sheesley
Barbara Smith
Sarah Smith
Darla & Curt Smith
Renee Smith
Lisa Smith
David & Donna Smith
Roanne Smith
Chase Smith
Mary Jo Smith
Heather Smith
David L. Smith
Nicole Smith
Alicia & Robert Smith
Andra Smith
Colleen Sneddon
Meredith Snook
Ian Snyder
Christina Snyder
Maryann Snyder
Jerry Sobelman
Matt Sober
Bud Sober
Charlotte Sober
Adriane Soehner
Beth A. Soergel
Eamonn Soll
Heather & The Sommer Family

Heather Soni
Sherry Soong
Cheryl & Richard Sorek
Heather Sorenson
Robert Sorrells
Carolyn Southwick
Christina Spade
Jeri Spann
Laurie A. Spatafore
Becki Spaude
Tiffany Speakman
Stephen E. Spear
Cameron & Chelsey Speed
Rosanne Spencer
Erica Sperber
Maureen Spezialetti
Bob Spinelli
Teresa & Carl Spirk
Cynthia A. Spirk
Shelley Sprung
Amy Stabingas
MaryBeth Stahl
Kelly Stake
Bl Stamm
Christine Stansbrough-Wagnon
Merrie Star
Hagen Starz
Carol A. Stasik
Deborah Stauffer
Sarah Steele
Linda Stefanowicz
Ann Steigerwaldt
Christina Stein
Tim Steitz
Brian Stephan
Mary Somidoo
Alyssa & Christopher
Stephenson-Famy
Kate Steratore
Michael Stern
Steven Stern
Judi Stern
Brian Stevens
Terri Stevens
Robin M. & Lisa C. Stevenson
Melinda Stevenson
Mylia Stevenson
Alyce Stewart
Alexandra Stewart
Marie Stibler
Susan Sticklely
MaryLou Stiefvater
Catherine Stika
Anna Stiller
Kyle Stimpert
Clarissa Stiteler
Maryanne F. Stock
Jennifer Stockdale
Renee Stockey
Jennifer Stoica
Roseanne C. Stoker
Thomas Stokum
Laura W. Stone
Char Stone
Jean C. Stone
Colleen Storm
Sheryl A. Stout
Anita Stoy
Mary Strange

James & Ruby Strange
Colleen S. Straub
Tara Streich- Tilles, M.D.
Andrew Strine, M.D.
Kaitlin Strollo
Paul Stroncer
Brooke Stull
Chanakarn Suebthawinkul
Kouhei Sugimoto
Dr. Paniti Sukumvanich
Tracy L. Sullivan
Terry Sullivan
Adam Sunde
Lexi Sundgren
Gina Sundmacher
Connie Surman
Steve Sutch
Patricia Swearingen
Mary Sweeney
Valerie Sweeney
Mike Sweeny
Evan Szablewski
Joseph S. Szabo
Michelle Szczypinski
Phyllis Szymanski
Kristen Taggart
Yasushi Takai
Cristina Talotta
Colleen Tanner
Connie Gundry & Ron Tappy
Dr. Julia Tasset
Jill Tatangelo
Amanda & Logan Tatarko
Charlotte Tatum
Henry Tatum
Laura Taylor
Elizabeth Taylor
Jordan Taylor
Lori Taylor
Darlaine L. Taylor
Rachel Taylor
Sarah & Michael Taylor
Veronica V. Taylor
Abby Taylor, M.D.
Tiffany Taylor
Michael Taylor
Phyllis M. Tedesco
Becky Tedjeske
Sandy Tengler
Barbara A. Terek
Gloria J. & James Robert Tershel
Karen & Nicholas Terzich
Sarah E. Thase
Steve Theleen
Kristen Thomas
Cary Thomas
Leeann Thomas
Lois E. Thomas
Larry Thomas
Ameiz Thompson
Nicole Thompson
Melanie Thomson
Alyssa Thomson
Kimberly & Christian Tiano
Lisa Timblin
Barbara Tinoco
Virginia Tipping Machak, RN
& Richard C. Machak
Erin & Keith Tison

Florin Toader
Marsha Toll
Kelly R. Tolley
Daniel Tolomeo
Maria Tolomeo
Megan Tomaino
Deanna Tomaselli
Mikey Tomchak
Mike & Leyte Tomchsk
Daniel Tomkins
Katy Tomlinson
Lori Tomsic Renko
Angela Toole
Leeann Toone
William Topsale
Salina Torgerson
Debbie Toth
Harvey S Totty
Mark Towers
Cory Tracy
Eunjin Tracy
Jill C. Trainor
Bruce Travers
Audrey Trebelhorn
Sunnie Trickett
Jill Trimble
Jackie Tritabaugh
Jill Troff
Nicoletta K. Tromans
Kevin Trostle
Dana Trouth
Caleb Trouth
Carol Trovato
Anthony & Lisa Trozzi
Catherine G. & Jack Trzeciak
Dorothy Tucker
Heather L. Tucker
Jordan Taylor
Lori Taylor
Darlaine L. Taylor
Rachel Taylor
Sarah & Michael Taylor
Veronica V. Taylor
Abby Taylor, M.D.
Tiffany Taylor
Michael Taylor
Phyllis M. Tedesco
Becky Tedjeske
Sandy Tengler
Barbara A. Terek
Gloria J. & James Robert Tershel
Karen & Nicholas Terzich
Sarah E. Thase
Steve Theleen
Kristen Thomas
Cary Thomas
Leeann Thomas
Lois E. Thomas
Larry Thomas
Ameiz Thompson
Nicole Thompson
Melanie Thomson
Alyssa Thomson
Kimberly & Christian Tiano
Lisa Timblin
Barbara Tinoco
Virginia Tipping Machak, RN
& Richard C. Machak
Erin & Keith Tison

Tyler Tyburski
Donna Uber
Sharon Ullrick
Alexa Umana
Sarah Uranowski-Fetters
Antionietta M. & Eric Urbanowicz
Dr. J. Robert & Cecile Utberg
Kadri Uusleer
Ibrahim Uygun
Nicole Vaccarella
Carrie Vaccaro
Cheryl Vacek
Susan Vadaparampil
Ali Valdez
Matteo Valle
Alice Van Horne
Tammy Van Lamoen
Carrie VanDenbergh
Abigail Vaughn
Dr. Sybil P. Veeder
Julie Veltman
Grant Veltman
Gerrit Veltman
Palma & Ottavio Veneziano
Josh Verbanets
Viju Verghis
Caroline Vezendy
Richard Vicary
Jennifer Victor
Terri A. Vidak
Brian Vieten
JoAnn Villa
Jim Villella
Mark Vincelett
Lorene & Denis Vinski
Ann Vinski
Robin Visinsky
Shannon Vitali
Chris VomiCoo
Jennifer Vitsas
Anda M. Vlad, M.D., Ph.D.
Daniel Vlad
Alex Vlad
Karen Vogel
Ryan & Brittany Voisey
Dana Voit

To pledge your
continued support,
visit MageeWomens.org
or call 412-641-8968

COMMUNITY DONORS

We thank the following people who donated through partners such as United Way, Facebook, Benevity, and Truist, as well as others.

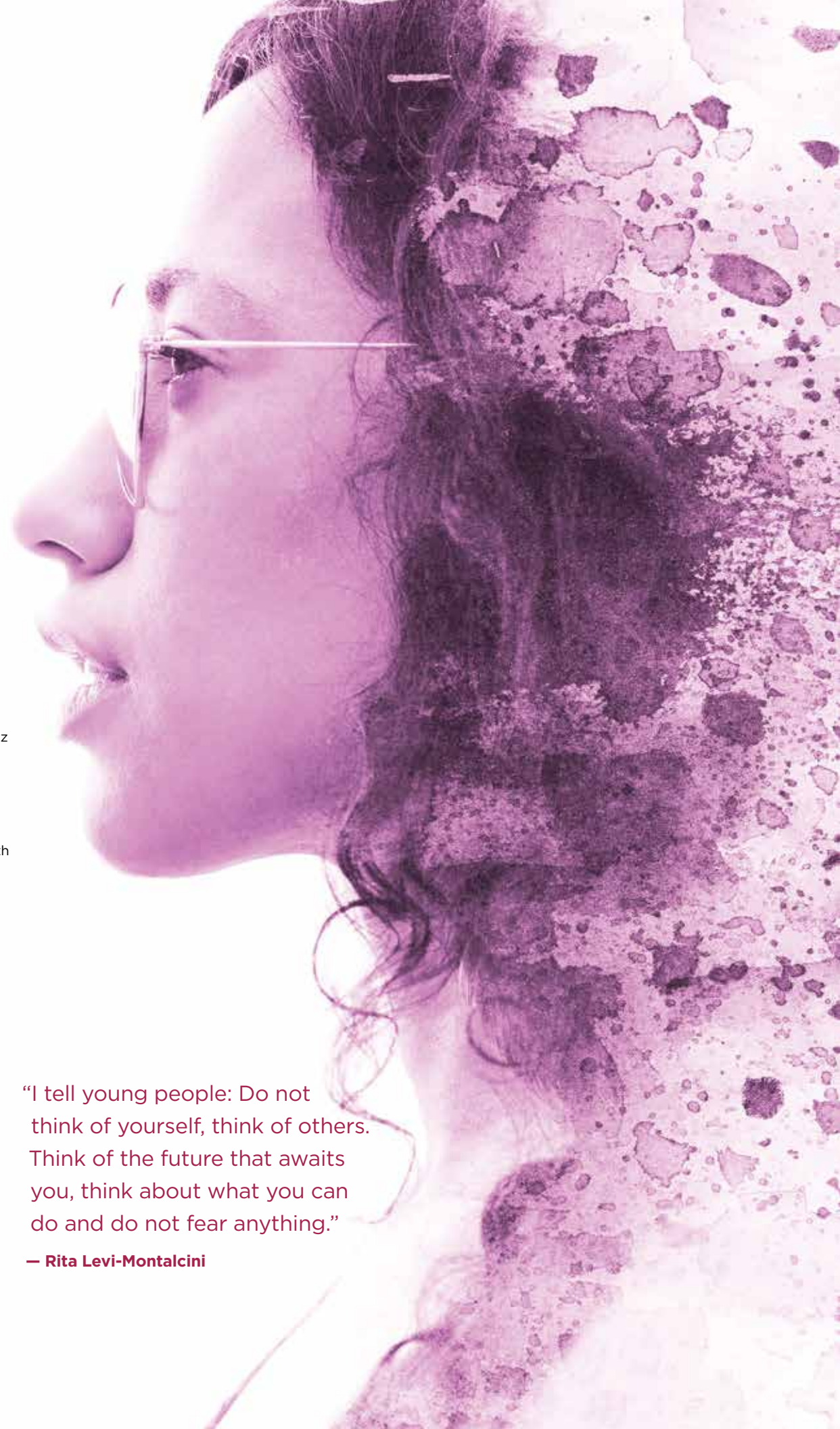
Dana Acinapura
Michelle Ackerman Teshu
Anna Alessandria
Jeffrey Mark Alex
Ashley Alexander
Jon Allen
Brittney Alley
Merek Aman
Heather Lynne Ambrose
Lisa Ambrose
Beth Ann
Dana Lynn Armstrong
Sara Beth Arvay
Kristin Atkinson
Donald Austel
Maribeth Bach
Barbara Barnes
Katie Troy Barnhart
Meghan N Barrera
Bill Beardsley
Jennifer Beatty
Benhard & Helen Behn
Timothy Bell
Ann Berkowitz
Lynn M. Bizich
Lucia M. Borrasso
Lauren Bosley
Nikole Boyda Mcguinness
Daniel A. Bradley
Ruth Braun
Bethany Martin Braund
Erin Britt
Kimberly A. Brooks
Kimberly Shields Brown
Clayton Burke
Michael F. Burns
Colin Burns
Mary Butler-Everson
William Cable
Josie Callahan
Henry O Callier
Frank Cannetti
Carly Cannoni-Shaw
Christopher Cantwell
Dawn Cardone
Angela R Carducci
Deborah Caruso Shand
Randy Carvlin
Heather Cassidy
Samantha Ceglarek
Annette Lynn Chaplik
Melissa Charlton
Lynn E. & Jams D. Chiafullo
Sandra A. Chontas
Tyler Clark
Lisa Claypool Stevenson
Michele M. Clemens
Nancy B. Closky
Paul Coebergh
Allyson Coff
Suzanne Coglio
Angela Maria Coldren
Catherine Margaret Collins
Kimberly J. Comer
Michelle Elana Corna
Sidney Coury
Mary Ellen Ellen Cowan
Lisa Critchfield
Teresa Ann Cronin

Lauren Davidson
Leslie C. Davis
Keashay E. Davis
David Dawkins
Kelly Deaugustino
Rita Deem
Joyce Defrancesco
Susan Patricia Demasters
Jackie Detty
Janice Ann Devine
Mia Diego
Mark A. Dipietrantonio
Erin P. Doyle
Gabrielle M. Drake Newsom
Joseph John Dressel
Stacey Dzurenda
Robert Page Edwards
Tammy Effinger
John P. Elliott
William R. Engel
Carrie Everstine
Karen Y. Ewing
Andrew Eyester
Susan K. Faight
John J. Fairbaugh
Kimberley A. Farrar
Megan E. Ferlic
Alan H. & Elizabeth A. Finegold
John Fisch
Michele M. Fisher
Brenda L. Fraas
Luanne Mary Fraer
Justin & Dawn Marie Friend
& Family
Dayna Frolo
Terri Frund
Jami Gensler
Eleanor Giarnelli
Lauren Gigante
Lauren Girvin
Karolina Glentzer
Donna J. Goliwas
Beth J. Gottshall
Diana Granchai
Ryan Gray
Deanne L. Greenawalt
Gordon Greene
Renee E. Grimes
Kristina Anetakis Gzikowski
Larkin H
Deanne J. Haag
Margaret Hanken
Leslie Hanson
Gregory Hantak
Ashley Marie Harper
Cynthia Ann Hartz
Nichole Heide
Barbara R. Hildebrand
Rosella C. Hoffmann
Mike Holzworth
David J. Hooker
Anna Horowitz
Karima K. Howard
Jeffrey Paul Howarth
Stephanie Hunter
Joanna Hurwitz
Caren Iannazzo
Matt Iannazzo

Janine Iannazzo
Sue Jamison
Katherine Jane
Kalesia L. Johnson
Jill Johnson
Diane Johnston
Melissa Jordan
Ian Joyce
Frances Joyce
Jodi Lynn Juba
Carol A. Kagemann
Seth & Lauren Kallen
Kathleen M. Karichko
Margaux Katz
Maria A. Keller
Debra D. Kenna
Katie Kilgallen
Stephanie Marie Kimbley
Autum Kissinger
Jenna Kochis
Pamela Hucko Koerner
Jesse Kristin
Jill M. Krivanek
Olivia Lammel
Scott M. Lammie
Lauren Elizabeth Lampark
Darcy V. Larrimore
Carol Larson
John A. Lea
Katherine Lenhart
Venus Leone
Dana D. Leskovic
Rainey Lind
Debra J. Lint
Matt Litzinger
Julia Liuson
Theresa A. Loadman
Kimberly Petri London
Debbie Lorber Schwing
Paula J. Lounder
Daniel J. Luchesa
Pamela J. Lupinacci
John M. Machi
Sarah J. Magilson
Amy Makin
Tam Malloy
Robert Maloney
Genna Marie Mancine
Lisa T. Manetta
Sam Manna
Michael J. Marchinsky
Sheila Marie
Linda Marinos Greer
Debra Marks
Deb Mazyck
John Mcguinness
Maribeth McLaughlin
Colleen M. McMahon
Cynthia L. McMonagle
Joan Walls McSorley
Mirela Menko
Cheryl Milburn
Dana Lynn Miller
Kristina R. Miller
Bianca Minniti-Bean
Alexa Stout Mobley
Angela M. Moczan
Gina Marie Molinero

Veronica Mortier
Kristen Anne Munch
Kathryn Murphy
VisionQuest Music Group
Spark Music Group
Linda Namaka
Tyler Niedzwicki
Alan Nogy
Melissa Orlosky
Donna Ottoviani
Karen Paczkowski
Jillian Parisoff
Richard M. Parnell
Mary Beth Pasqualicchio
Trudy Melzer Pavlik
Debra J. Pawlicki
Wanda Peroni
Jessica Rae Silay Petrunak
Vivian Petticord
Sharon & Ben Phillips
Adelaide Pingue
Scott E. Pisula
Shay-Recruiter Pitts-Medical
Carol Polenik
Kellen Pomeranz
Doris A. Ponder
Kelly Ann Poole
Susan L. Price
Julie A. Prough
Alyssa Radziwon
Amanda Rae
Dana D. Leskovic
Sean M. Reilly
Jess Reinhart
Karl Reinsch
Chad Reisig
Thomas M Reiter
Todd Restivo
Gina Restivo
Cheryl A. Richards
Denise L. Ritter
Russell Rock Rockney
Lynette Marie Rosenberger
Cathy Rowe
Michael P. Rubin
Dante Russo
Nicholas John Rust
Kimberly A. Ruud
Daniel Ryave
Terri S
James V Sacco
Sharon L. Saginaw
Scott & Carolyn Sanford
Linda Sauro
Dianne A. Sawl
Franz A. Schaefer
Zach Scheimer
Katherine Scholl
Jerry & Kimberly Sciulli
Michael Sciulli
Johannah Goetzmann Scott
Casey Scott
Adrienne Seapker
Kristina R. Miller
Missy Seleyo
Thomas M. Senneway
Marjorie Ann Seskey
Karen L. Shaffer

Megan Lorena Sheesley
Brittany A. Sheets
Devin & Candi Shelgren
Melissa Ann Sherrange
Ann Laurel Shettig
Jonny Shorr
Jovanna M. Silipigni
Jeremy Silver
Hyagriv Simhan
Lisa Marie Simmons-Jump
Rakesh Kumar Sindhi
Philip Sirianni
Richard Skubak
David Sleath
Donna M. Smith
Andy Smith
Dr. Francis X., Jr.
& Lenette Solano
Holly Sommer
Leon Springel
Melinda Stasenko
Lee Stevenson
Teresa Stewart-Williams
Brandon Stotka
Colleen A. Straub
Emily Summers (Willmore)
Linda Sumner
Carla Sunderland
Cassandra Supik
Janet E Sutton
Bill Sutton
Kelly Suzanne
Matthew Edward Szalankiewicz
Jessica Lynn Tardio
Chris Teodori
Mary Terwilliger
Missy Timko
Santino Tomasetti
Georgina Trunzo
Chatón T. Turner & Andre Smith
Allan Tylka
Ali Valdez
Joseph R. Veltri
Ericka Ventura
Denise Veselic
Bonnie E. Waddell
Sharon Wagner
Ben Walker
Rachel Dara Wall
Jim Wanshue
William Watts
Luke Weber
Denise Weckoski
Haylie Welcer
Daniel White
Anita G. Whiteman
Aubrey Wickenheiser
Denise Catherine Wickline
Laura Wilson Bishop
Kenny Wiltz
Becki Yeh
Johnny Yettsconish
Melissa J. Young
Alexandra Zellner
Chengye Zhang
Mei Xue



“I tell young people: Do not think of yourself, think of others. Think of the future that awaits you, think about what you can do and do not fear anything.”

— Rita Levi-Montalcini

TRIBUTES

In memory of Tom Alexander
Gayle & Lawrence Piroli

In honor of Mary E B Allen
Trina Miles

In memory of Michael Anthony Amadeo
Michael Amadeo

In honor of Kristina Anetakis-Gzikowski
Kristina Anetakis-Gzikowski
In memory of Katherine M. Ansell
Jarrod D. Ansell

In memory of Joanne Appleby
Ann Wilson

In honor of Aunt Gail
Carli Yoho

In memory of Ralf Ball
Jimmy Fox

In memory of Joan Beck
Wilma Sheesley

In honor of Chris Begany
Daniel Bradley

In memory of Dolores Belcastro
Edward & Judith Kowalski

In memory of Dr. Charles Bender
UMPC Magee-Womens Hospital

In memory of Daniel M. Berger
The Pittsburgh Foundation

In memory of Kathy Bernhardt
Martha Belanger

In honor of Alice Bevelaqua
Christine Amore

In honor of Beth Bitkowski
Daniel Bradley

In memory of Dionne Blackwell
Jennifer Beckjord

Ruth Craig

Elizabeth Mussari
William Zbrzezny

In honor of Kathie Blakeman
Jill Berardi

In memory of Nickolas Borushko
Patricia L. Borushko

In honor of Pat Boyer
Wilma Sheesley

In honor of Evelyn Brinzer
Rebecca Whalen

In honor of Mary Lou Brown
Wilma Sheesley

In honor of Suzanne Brown
Wilma Sheesley

In honor of Dr. Adam Brufsky
Veronica V. Taylor

In honor of Curtis P. Bucher's birthday
Melva E. Deitt

In honor of Jenna Burd
Susan Burd

In honor of Jake Byrne
Carli Yoho

In memory of Michelle Caplan
Zandra L. Goldberg

In honor of Dr. Steve N. Caritis
Alyssa & Christopher Stephenson-Famy

In honor of Karen Causino
Teresa Rosato

In honor of Frances Chapman
Connie Hornbeck

In memory of Emily Clark Farrell
Ruth Myer

In honor of Dr. Lan G. Coffman
Jon Hurwitz

In honor of Carrie Coghill
Anonymous

In honor of Josie Collier
Bradley & Darlene

Scarpaci Violetta

In honor of Krista Compton
Sharon S. Compton

In memory of Joyce Conn
Barbara Giammatteo

In honor of Dr. Madeleine
Courtney-Brooks

Christine & Thomas Murray

In memory of Dr. William R. Crombleholme
Anonymous

Vivien L. Pan, M.D.

In memory of Gabriella Josephine D'Alesio
Alene & Jason D'Alesio

In memory of Anne Marie Davis
Cindy Gilfert

In honor of Dr. Kimberly Davis
Lady Nwadike

In honor of Matt & Tiffany Deitch's Wedding
James Ball

Rory Barratt
Deborah Becker

Natalie Brieger
Elizabeth Britt

Carrie Coghill & Michael Sullivan
Nick Cosentino

Erin Daley
Amy Flynn

Rebecca Francus
Judi Friedberg

Miriam Halperin-Maya
Carolina Jayaram

Lauren Jones
Judy Keever

Kristina Kloman
William Knobloch

Stephen Linder
Joseph Luchtan

Noah Lundberg
Jewel Malone

Dan Merica
Penny Metchev

Abhay Nayak
Sue Norton

Patricia Porter
The Seed Family Charitable Fund

Alexandra Smith
Rosanne Spencer

Alice Van Horne
Mark Vincelett

Abraham Wikler
Mark Williams

In honor of Amy Demeo
Maureen A. Donohue

In memory of Cynthia DeNorcy
Leah & Dale A. Berkey

Central City Church
Sharon Cicmansky

County of Somerset
Diloreto Nursery & Landscaping

Pamela & Kim Estep
Joyce A. & Patrick T. Ferko

Edward W. & Nancy Lee Hardy
Devona Kasonye

Marie & Glenn Landis
Melissa Naret

Cindy & Rodger Newman
Southern Somerset County

Basketball Association
Twin Lakes

VFW Central City Post 7457
Robin Visinsky

Wilmore Coal Company
Sherry L. & Edward B. Wilson

Windber Chapter Football
Officials

Karen J. & John M. Wozniak
Mark D. & Deanna J. Wurzbach

Karen M. Zelenski
In memory of Ann Devore
Chautaugua Lake Neighbors

In honor of Jordan Diamondstone's birthday
Richard & Karen Diamondstone

In memory of Rebecca Dick-Hurwitz
Jesse Burns

Cookson Peirce
James Graham

Rachael Heisler
Dr. Betty J. Hirschfield-Louik

& Howard Louik
Marian Huq

Jon Hurwitz
Jolly Lloyd

Mary Frances Malone
Sandra Marsh

Bert & Susan Rockman
Laurie Sabol

Christine M. Santone
Christine Stansbrough-Wagnon

Merrie Star
Laura W. Stone

Marsha Toll
Catherine G. & Jack Trzeciak

Jennifer Victor

In honor of Dr. Emilia Diego
Steven E. & Susan K. Wesmiller

In honor of George & Robert Disantis
Jenna Young

In honor of Laura Dolnik
Lisa Bender

In memory of Kathleen Downey
Barbara Adair

Barbara Cobb
Lisa Hess

In honor of Tim & Mary Beth Dugan
Christina Dugan

In honor of Laura Duke-Finn
Wilma Sheesley

In memory of Peggy Dunklin
Edith B. & Jacob Naveh

In memory of Susan B. Edelstone
Dr. Daniel I. Edelstone & Dodi

Walker Gross

In honor of Dr. Robert P. Edwards
Sherry Hilbert

In honor of Dr. Stephen P. Emery
Nicole L. & Ryan M. Tyson

In memory of Julene T. Fabrizio
Ruth Anne Dayton

William F. Fabrizio
In memory of Darcel Fahy

Leah & Dale A. Berkey
Patricia Bustamante

Central City Church
Barry Chezik

Sharon Cicmansky
Cynthia & Edward DeNorcy

Devout Brewing, LLC
Diloreto Nursery & Landscaping

Pamela & Kim Estep
Michael Fahy

Samuel Fee
Joseph & Margaret J. Ference

Joyce A. & Patrick T. Ferko
Mark Franks

Jeff Guidos
Edward W. & Nancy Lee Hardy

Steve Ilnicki

In memory of Darcel Fahy (cont.)
Joshua Jones

Devona Kasonye
Constance Kennedy

Donna Kudasik
Marie & Glenn Landis

Mark Larimer Jr
Lost In The Wilds Brewing

Zachary Morrow
Dr. James Moses

Melissa Naret
Cindy & Rodger Newman

Olde Bedford Brewing Company
Quinn Brewing Company

Katyanne Quirk
Jeremy Shearer

Shanna Sipe
Spring Dam Brewing

Jennifer Stoica
Stone Bridge Brewing Company

Michael Sukitch
John Titus

Twin Lakes
Unity Brewing

Cheryl Vacek
VFW Central City Post 7457

Robin Visinsky
Whitehorse Brewing, LLC - Berlin

Sherry L. & Edward B. Wilson
Karen J. & John M. Wozniak

Mark D. & Deanna J. Wurzbach
Karen M. Zelenski

In honor of Victoria Fertitta
Rozaanne Meservy

In honor of "I"rey & Cass Finley
Kelly & Tom Finley

Beverly Hammers
Laura L. & Joseph L. Laurain

Linda J. & Robert F. Oneill
In memory of Liam C. Finnigan

Ron Bauer
Susan Baumann

Robert Brown
James & Lori Buckreis

Serge & Virginia Burenin
Walter Burenin

Dawn Butler
Barbara Byers

Patty Carey
Jodie Clark

Clare Collins & Brian P. Gabriel
Jennifer Davis

Thomas & Carol Eyles
Melanie & Christopher Finnigan

Kayla Frye
Lisa Gavlik

Deborah Grice Conway, Ph.D.
Laura S. Guido

Gregory & Kristy Hartman
Kellee Herbster

James J. & Kim Joy
Margaret Klein

Mary R. & Barry D. Kukovich
Judy M. Lowstetter

Laura Lydic
Adrienne J. Maist

David Martin
Ellen Mazo

Bonnie & Bob McLaughlin
Tamra E. Minnier

Diane Muscia
Geri & Nick Novotni

Karen Pastor
Tracy Petras

William & Cheryl Picard
Jenny & David Pittman

Marisa Pompeo
Karissa Quinlan

Wilma Sheesley
Megan L. Sheesley

Jill C. Trainor
Deborah M. & James M. Turner

Robin Tush
Dana Voit

Stephanie Vukmanic
Dean Walters

Dr. Jon & Susan Watchko
Jessica & William Weidensall

Dee Dee Woods
In memory of Dora Lee Fitzhenry

Susan De Santi
In honor of Shirley Flanagan

Stacy Flanagan
In memory of Shirley Ann Folino

Donna M. Folino
In honor of Leslie Forney on Mother's Day

Chubb & Son
Andrea Forney

TRIBUTES

In memory of Ethan Robert Frenie

Sarah Olbrich & Christopher Frenie

In honor of Zachary C. Frenie

Sarah Olbrich & Christopher Frenie

In honor of Lillian Frenie

Sarah Olbrich & Christopher Frenie

In memory of Linda Lee Fresina

Lisa Smith

In honor of Dr. Rosemary Froehlich

Mary K. Fisher

In memory of

Michael Anthony Galata

Diane & Al Muir

In honor of Aaron Gall

Georgann Gall

In honor of Kate Gittings

Erica Sperber

In honor of Moira Gledhill

Sophia Gledhill

In memory of Ricky Goats

Darleen Gourieux

In honor of Abby Goddell

Julie Dennis

In honor of Dr. Kristi Graves

Lady Nwadike

In honor of Kathryn Green

Lynn Panciera-Fraser

In honor of Sharon Greenfield

Danny Greenfield

In honor of Tracy Griffin Johnson

Deborah Williams

In honor of

Judy Gundry & Family

Connie Gundry & Ron Tappy

In honor of Dr. Melyssa Haffaf

Lady Nwadike

In honor of Dr. Brian Hamlin

Marie E. Corns

In honor of Zac Haras

Megan L. Sheesley

In honor of Taylor Hardy

Jenna Nypaver

In honor of Sharon Helfrich

Megan Jamison

In honor of Beth Herrman

Julie Arnheim

In memory of Kelly Hilpert

Daniel Bradley

In memory of Judy Himler

Edgar C. & Dawn L. Himler

In memory of Dorothy Holley

Dr. Beth M. Piraino

In honor of Rebecca Horowitz

Patricia Maedinger

In honor of Peter Howard

Lindsay P. & Jeanne Howard

In memory of

Jessica Howe Lacava

Jean C. Stone

Michelle Kuczykowski

Amy D. Boyd

Katie Bucci

Erin Bussard

Meghan Dawson

Jennifer Ellermeyer

In memory of

Jessica Howe Lacava (cont.)

Lauren & Michael Gorman

Leah M. Kelly

Kimberly A. Kranz

Michelle Kuczykowski

Barbara L. Lawrence

Kelly Martin

Michele McCaffrey

Elvira Pampena

Kristen Pope

Jody Pujol

Amanda Shupe

Christina Spade

Jean C. Stone

Laura Taylor

In honor of Mike Hoyle's birthday

Georgine Early

In memory of Mary A. Humphries

George McCullen

In memory of Mary Lou Hunter

The Clark Hunter Foundation

In memory of Cydnee Hutton

Thomas Evancho

In honor of Caren Iannazzo

Matt Iannazzo

In honor of Ashley Iannazzo

Matt Iannazzo

In memory of Ava Katherine

Sarah Ilgenfritz

Kenneth & Susan Ilgenfritz

Paul & Margaret Kepple

Barbara & Robert Kepple

In honor of Max Jackel's birthday

Taleesha & David Jackel

In honor of

Laura Jacko & Family

Megan L. Sheesley

In honor of Dr. Ronald R. Johnson

Beth Conway

In memory of Peggy Joy

Carol McCarthy

In memory of Patricia Kaley

Donna Aldrich

In honor of Dr. Joseph Kelley

Christopher & Mary Beth Leech

In memory of Jean K. Kelley

Gayle & Lawrence Piroli

In memory of Lois Kelly

Donna Blinn & David Ottoviani

In honor of Kristin Kincade

George

Vincent & Vicki Kincade

In honor of Ryan Kindig-

Sydlongco

Linda Stefanowicz

In honor of Lois King

Thomas King

In memory of Judy L. Krauss

Kathrin Haderer

In honor of Jacklyn Kubiak

Carli Yoho

In honor of Dr. Carolyn J. Kubik

Judith & Anthony Albert

Robert Freis

In honor of Riley Lang's birthday

Anonymous

EQT Foundation

Lia A. & Jonathan P. Fodi

Ian & Brooke Lang

Range Resources Corporation

Siegel Eye Care Associates

Kelly R. Tolley

In memory of Dr. Richard Latkin

Libby Dub

In honor of Laura Leach

Daniel Bradley

In memory of Judy L. Lesko

Madison Kasperek

In memory of Nicole L. Lewis

Angelo Fiumara

Carol L. & John C. Fogle

Marcie Lewis

Thomas Miller

Ed & Sandi Morgan

Henry Oleyniczak

In memory of

Megan Lhota Calderaro

Debra Lhota

In memory of Albert J. Love

Deanna Love Rutman, M.D.

In memory of Charlotte Love

Deanna Love Rutman, M.D.

In memory of Sally Lynch

Anita Stoy

In memory of Kathleen M. Lyons

Edward Balzer

Margaret Ann Maxwell

In memory of Karen Sue Mackey

Rachel Lilley

In honor of Karen Mackey

Richard Wise

In memory of

Margaret Magee Gample

Patti McLain

In memory of Dominic Mancuso

Sharon S. Compton

In honor of Jess Mann

Megan L. Sheesley

In memory of Juliana Markwell

Autumn Becker

Eric J. & Larissa Betka

Patti Betka

Michael Bizub

Bobby Rahal Automotive Group

Ellen Dugan

Karen Evans

Field & Technical Services, LLC

Samuel Gerber

Laurie & Geoffrey Gerber

Alexander & Jordan Guaraldi

Jaime Hindlin

Cynthia Jones

KEY Environmental, Inc.

Kline

Robert S. Markwell

Robert Mizner

Karen Pesich

Ezio C. Piccioni

Melvin Reichenbaugh

Anthony Sangiacomo

Michael Slenska

In memory of Juliana Markwell

(cont.)

Heather & The Sommer Family

Jim Spencer

Joseph Tucker

Terri A. Vidak

Gary Wilkin

In memory of Joanne Marshall

Juliet Gettings

In memory of Gary Martell

Gayle & Lawrence Piroli

In memory of

Veronica B. "Roni" Mattson

Lisa & Matthew Salamone

In honor of Matt & Wendy

Mayer's wedding

Jerry Sobelman

In honor of Ellen Mazo

Kathy Heisler

In honor of Dr. Priscilla McAuliffe

H.V. Blaxter III and Bonnie Blaxter

In honor of Matt & Wendy

Steven E. & Susan K. Wesmiller

In honor of Dr. John J. McCarthy,

Jr.'s 96th birthday

Dr. Michael & Linn Swanson

In memory of

Madalane McClintock

Marisa Barone

Anthony DiToto

Maureen & Bob Grenke

In memory of Ronda McConnell

Terri Dorsch

Duane Girard

Jill Jones

Lisa Schmitt

In honor of Sam McConnell

Karen D. Potter

In honor of Amanda Dilling

Amanda Dilling

In memory of Liam McDonough

Michael S.

& Jennifer M. McDonough

In honor of Ann McIntyre

Wilma Sheesley

In honor of Jackie McKenney

Serena Chan, M.D.

In honor of Debi Meneely

Wilma Sheesley

In honor of Joan Metzgar

Kelly Metzgar

In honor of Brandy Mitchell

Jenna & Frankie Los DiFrancesco

In memory of Diane Mitra

Mary Baird

Lorelei Burns

Therese C. Chadowski

Joyce Christensen

& Eileen Doucette

Lisa Cohn

Elizabeth Davis

Sylvie Downey

The Erie Community Foundation

Elizabeth Fagen

Zippie Gibson-Davis

Foram Gopalji

Leigh Grady

Alicia Gray

In memory of Diane Mitra

(cont.)

Stacey Gregg

Amy Gustafson

Jill Hirsch

Marisa Jones

Sean P. & Karen S. Kelly

Hannah Lyons

Sarah Mardon

Peggy Melvin

Renaissance Charitable

Jim Sciortino

Sidorovich Family

Sheryl A. Stout

Tony Walford

Joy Winterburn

In honor of Dr. Pamela A. Moalli

Mary Ann Heneroty

In honor of Jane Monstrola

Megan Remaley

In honor of Jamison Morgan

Jamie Morgan

In honor of Helen Morris

Wilma Sheesley

In honor of Amy Morris

Wilma Sheesley

In honor of Bonnie Morrow

Wilma Sheesley

In honor of My Oma

Beth Conway

In honor of Sophie Myerson

Matthew Myerson

In honor of Mary Neuman

Joan McSorley

In memory of Rosemary Niemiec

Rachel Niemiec

In honor of Norma & Julee

Candice Ritchey

BUSINESSES, FOUNDATIONS, AND ORGANIZATIONS

FOUNDER'S CIRCLE (\$10,000 AND UP)

84 Lumber Company
A Glimmer of Hope
AbbVie Inc.
Addison H. Gibson Foundation
Allegheny Community Home Care
AstraZeneca LP
The Deborah and David Baron donor advised fund at Fidelity Charitable Gift Fund
The Margaret R. Ritchie Battle Family Charitable Fund at Schwab Charitable Fund
The Bellin/Coontz Family Giving Fund Fidelity Charitable Gift Fund
The Berger Family Fund of The Pittsburgh Foundation/Community Foundation of Westmoreland County
Bio-Rad Laboratories, Inc.
The Virginia and Serge Burenin Giving Fund of Fidelity Charitable Gift Fund
Burroughs Wellcome Fund
Catalyst OrthoScience
Central Catholic High School
Charles A. Brooks Charities Civil & Environmental Consultants, Inc.
Coyote Outdoor Living
The Creinin Family Charitable Fund donor advised fund at Fidelity Charitable Gift Fund
FundFidelity Charitable Gift Fund
Cummerbund Society
The Joan and George Fund of the Pittsburgh Foundation/Community Foundation of Westmoreland County
Energy Transfer
Equitrans Midstream
Essential Foundation
The CCMO Charitable Trust on behalf of Elizabeth Fagan at Fidelity Charitable Gift Fund
Fort Pitt Capital Group
The Chris Allison and Jane France Charitable Fund of the Fidelity Charitable Gift Fund
Galanter Tomosovich, LLC
GBU Life
Genentech
The Kelly Gray Fund at Schwab Charitable at Schwab Charitable Fund
The Diane Foster Greubel Fund of The Pittsburgh Foundation/Community Foundation
Grunau Company
Hefren-Tillotson, Inc.
Henry Ford Health System
The Kenneth and Joan Horoho Fund at Schwab Charitable Fund
Jane's Room
Jewish Healthcare Foundation
KeyBank National

The Dan and Linda Lattanzi Fund for Charitable Giving within the Raymond James Charitable Endowment Fund at Schwab Charitable Fund
Howard Hanna Children's Free Care Fund
March of Dimes
McClmonds Supply & Transit, Inc.
The William Bruce McCrory Fund of The Pittsburgh Foundation/Community Foundation of Westmoreland County
Moon Area Cheer Boosters
Noah Angelici Hope Foundation
P.J. Dick, Inc.
Paul M. Rike Irrevocable Deed of Trust
Pittsburgh Dist. Ford Ads., Inc.
PromoWest Northshore Complex LLC
Range Resources Corporation
Ryon Construction, Inc.
The Snavely Family Fund at Schwab Charitable Fund
Scaife Family Foundation
Seagen
The Seed Family Charitable Fund a donor-advised fund at Fidelity Charitable Gift Fund
Smail Auto Group
David A. Smith Family Fund of The Pittsburgh Foundation/Community Foundation of Westmoreland County
Snee-Reinhardt Charitable Foundation
The Breasties
The Clark Hunter Foundation
The Gateway Engineers, Inc.
The Gibson Gives | Gibson Foundation
The Gismondi Foundation
The Grable Foundation
The Twenty-Five Club
The Womens Auxiliary of Magee-Womens Hospital of UPMC
The Dr. Mark E. Thompson Fund of The Pittsburgh Foundation/Community Foundation of Westmoreland County
Tulsa Community Foundation
UPMC
UPMC Health Plan
UPMC Magee-Womens Hospital
The Charles & Laurie VanSwearingen Charitable Contribution Fund at Fidelity Charitable Gift Fund
Volunteer Service Board
The John & Patricia Whitehill Fund of The Paul D. Schurgot Foundation
William M. Stout Revocable Trust

TRUSTEE (\$5,000 - \$9,999)

Abbott Laboratories, Inc.
American Society for Reproductive Medicine
Babst, Calland, Clements and Zomnir, P.C.
Closet Factory
Coffee Tree Roasters
Coherus Biosciences, Inc.
Coldwell Banker Realty
GlaxoSmithKline
Guaranteed Rate Affinity, LLC
Huntley & Huntley Exploration, Inc.
Mead Johnson Nutrition/RB
Merck & Co. Inc.
MLBC Foundation
Pittsburgh Bereavement Doulas
Pittsburgh Steelers Sports, Inc.
Point Park University Rowland School of Business
Realogy Charitable Foundation
ReproTech LLC
Sera Prognostics
SING SING SING!
The Burkland Foundation
The Mall at Robinson
The San Diego Foundation
TherapeuticsMD
University of Pittsburgh
The Gregory and Karen Zovko Charitable Fund at Vanguard Charitable Endowment Program

PRESIDENT (\$2,500 - \$4,999)

AI Solutions, Inc.
Allstate Medical
Caris Life Sciences
Charities Aid Foundation America
Cintas Corporation #06
CJL Engineering
Commonwealth Charitable Fund
CPL
CrawfordEllenbogen, LLC
Duquesne Light Company
Gateway Financial Group
Giant Eagle
JD Law
Kroff Chemical Company, Inc.
Landau Building Co.
Magee-Womens Research Institute
Maher Duessel
My Secret Spa
North Allegheny Cheerleading Boosters
PNC
Pollock Begg
SLT Production, LLC
SUPERCUTS of Pennsylvania
The Herbst Foundation
The Vault Recording Studio, LLC
The Williams Companies, Inc.
Bruce & Barbara Wiegand Family Foundation

BENEFACTOR (\$1,000 - \$2,499)

Allen + Shariff Engineering
Ally Financial, Inc.
Automated Logic
Brewer Airport Toyota

Chiesi USA, Inc.
Duquesne University School of Law
Fallon Electric Co., Inc.
Ferry Electric Company
Fierst Distributing Company
Franklin Integrated Interiors
Sally and Chris Fullman donor advised fund of Renaissance Charitable
Global Pregnancy CoLab
Virtual Conference
James Gallery
Marathon Petroleum Company
Masquerade\$5 Team
MBM Contracting, Inc.
Novartis
Pepsi Beverage Company
PPG Industries, Inc.
RM Creative
RoBotany Ltd.
Rochester Area School District
Roger and Lynne Wilhelm Family Trust
The James R. and Cheryl B. Snyder Family Charitable Fund of Renaissance Charitable Foundation
Margaret L. Stevens Foundation on behalf of Elizabeth Hazel
The Hillman Company
The Vaccarello Family Fund of the National Christian Foundation of National Christian Foundation
Whitehorse Brewing, LLC - Berlin

HUMANITARIAN (\$500 - \$999)

AE Works LTD.
The Patti and Sandy Berman Foundation of the Jewish Community Foundation of Greater Pittsburgh
Birdsfoot Golf Club
BNY Mellon
Bronze Beauty Spray Tanning
Charity Golf International
Coldwell Banker Realty
Coldwell Banker Res Brokerage Corp
Cyclebar Robinson
Devout Brewing, LLC
Drusky Entertainment, LLC
Ice and Elegance
Innovative Wellness Center
The Lawrence M. & Lynn R. Lebowitz Philanthropic Fund of the Jewish Community Foundation of Greater Pittsburgh
Lost In The Wilds Brewing
Magee NICU Physicians Group
MAHS Boys Soccer Boosters
MDU Resources Group, Inc.
Mid Atlantic Mothers' Milk Bank
Miltenyi Biotec
NailChic
Olde Bedford Brewing Company
Peloton
Pittsburgh Business Group on Health

Pittsburgh Magazine
Point Park University
Quinn Brewing Company
Recon Brewing
Richlands Sportsman's Association
Shear Talent
South Fayette Township School District Class of 2023
Spring Dam Brewing
Stone Bridge Brewing Company
The Double Eagle Foundation
The Farmers Daughter Flowers LLC
TRUSS Brewing Company
Tungsten Creative Group, Inc
Unity Brewing
Walk Run Lift Studio

FRIENDS OF MAGEE (UP TO \$499)

AmazonSmile Foundation
Arnilak Foundation
Board and Brush Pittsburgh North
Bobby Rahal Automotive Group
Central City Church
Clara's Collars
Cookson Peirce
County of Somerset
CustomInk, LLC
Dickerson Creative Communications
Diloreto Nursery & Landscaping
Field & Technical Services, LLC
The Arthur J. Gallagher Foundation
Gateway High School Girls Soccer Team
GFWC Town and Country Woman's Club
In the Bag, Inc.
International Union of Operating Engineers Local # 95
KEY Environmental, Inc.
UPMC Magee-Womens Hospital
UPMC Magee-Womens Hospital Gift Shop
McDonald American Legion Auxiliary 485
Oilio LLC / Liokareas
Park Street Treats
Pink Zebra
Rich Fitzgerald Inaugural Committee
Seth Services Management
Siegel Eye Care Associates
Southern Somerset County Basketball Association
SP Global Fund
Strack Foundation
Texas Instruments Foundation
The Erie Community Foundation
Twin Lakes
Urban Crate, LLC
Usborne Books and More
VFW Central City Post 7457
Wahlburgers Robinson
Wilmore Coal Company
Windber Chapter Football Officials
Wright Commercial Floors
Wyoming Way, LLC
YourCause, LLC
ZSilver 925 Sales





3240 Craft Place, Suite 100 | Pittsburgh, PA 15213 | 412.641.8977

MageeWomens.org